

Алматы (7273)495-231  
Ангарск (3955)60-70-56  
Архангельск (8182)63-90-72  
Астрахань (8512)99-46-04  
Барнаул (3852)73-04-60  
Белгород (4722)40-23-64  
Благовещенск (4162)22-76-07  
Брянск (4832)59-03-52  
Владивосток (423)249-28-31  
Владикавказ (8672)28-90-48  
Владимир (4922)49-43-18  
Волгоград (844)278-03-48  
Вологда (8172)26-41-59  
Воронеж (473)204-51-73  
Екатеринбург (343)384-55-89

Иваново (4932)77-34-06  
Ижевск (3412)26-03-58  
Иркутск (395)279-98-46  
Казань (843)206-01-48  
Калининград (4012)72-03-81  
Калуга (4842)92-23-67  
Кемерово (3842)65-04-62  
Киров (8332)68-02-04  
Коломна (4966)23-41-49  
Кострома (4942)77-07-48  
Краснодар (861)203-40-90  
Красноярск (391)204-63-61  
Курск (4712)77-13-04  
Курган (3522)50-90-47  
Липецк (4742)52-20-81

Магнитогорск (3519)55-03-13  
Москва (495)268-04-70  
Мурманск (8152)59-64-93  
Набережные Челны (8552)20-53-41  
Нижний Новгород (831)429-08-12  
Новокузнецк (3843)20-46-81  
Ноябрьск (3496)41-32-12  
Новосибирск (383)227-86-73  
Омск (3812)21-46-40  
Орел (4862)44-53-42  
Оренбург (3532)37-68-04  
Пенза (8412)22-31-16  
Петрозаводск (8142)55-98-37  
Псков (8112)59-10-37  
Пермь (342)205-81-47

Ростов-на-Дону (863)308-18-15  
Рязань (4912)46-61-64  
Самара (846)206-03-16  
Санкт-Петербург (812)309-46-40  
Саратов (845)249-38-78  
Севастополь (8692)22-31-93  
Саранск (8342)22-96-24  
Симферополь (3652)67-13-56  
Смоленск (4812)29-41-54  
Сочи (862)225-72-31  
Ставрополь (8652)20-65-13  
Сургут (3462)77-98-35  
Сыктывкар (8212)25-95-17  
Тамбов (4752)50-40-97  
Тверь (4822)63-31-35

Тольятти (8482)63-91-07  
Томск (3822)98-41-53  
Тула (4872)33-79-87  
Тюмень (3452)66-21-18  
Ульяновск (8422)24-23-59  
Улан-Удэ (3012)59-97-51  
Уфа (347)229-48-12  
Хабаровск (4212)92-98-04  
Чебоксары (8352)28-53-07  
Челябинск (351)202-03-61  
Череповец (8202)49-02-64  
Чита (3022)38-34-83  
Якутск (4112)23-90-97  
Ярославль (4852)69-52-93

Россия +7(495)268-04-70

Казахстан +7(7172)727-132

Киргизия +996(312)96-26-47

<https://runda.nt-rt.ru/> || [rac@nt-rt.ru](mailto:rac@nt-rt.ru)



**NINGBO RUNDA MACHINERY CO., LTD**  
**NINGBO VITALITY COMMUNICATION TECHNOLOGY CO., LTD**



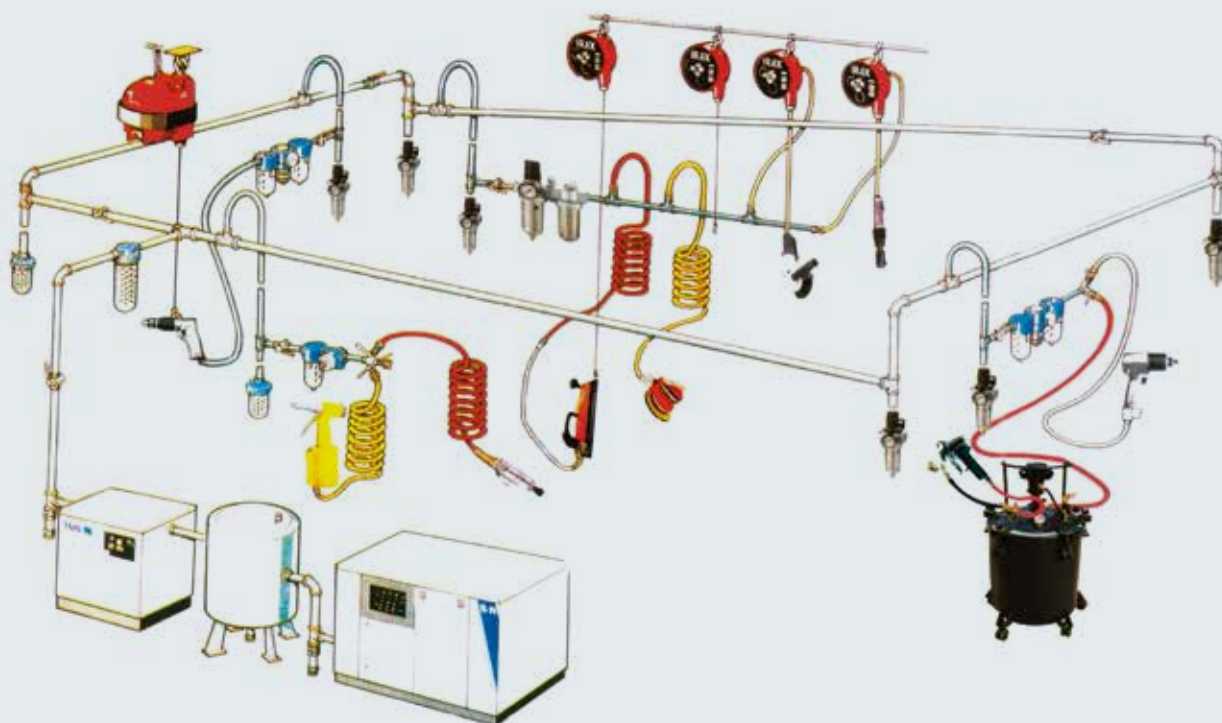
Ningbo Runda Machinery Co., Ltd, which founded in 1998, located in No.1 HongFa road, zone A of HongTang industrial park, JiangBei District, NingBo, China. We are a manufacturer and supplier both in air tools and spray guns. After years of development, our company now covers an area of 40,000 square meters, possessing five major assembly lines, 60 large-scale machining center devices and over 300 NC production machines, and have a powerful technical force of employees. The developing department consists of advanced technology team which is devoted to developing new products, testing product life expectancy and improving technological service. We deeply believe that quality is the life of a company, moreover we regard it as our most valuable wealth. In 2000, we successfully obtained the ISO Quality Management System Certification and followed the ISO9000:2000 Standard in its production process.

The enterprise always adopts 5S Lean Control System to guarantee products' quality in daily administration. As the high quality of our products, we have established long-term and good business cooperation relationships with many oversea clients. Our brands such as "RUNDA", "THVN" and "WANLI" enjoy a high reputation both at domestic market and abroad. Many well known companies are our OEM clients. Our products have been well-sold in European, American and Asia-Pacific regions, where we have professional agents.

We insist in the business concept of "Quality First, Credit Supreme and Customer Upmost". The trust and satisfaction from customers is our chief objective. With efficient management, investment on new production technology, and continuous recruitment of talents, we are making great efforts to make you become our clients and friends.



## AIR SYSTEM LAYOUT



## CONVERSION FACTORS

### TORQUE

$1 \text{ kpm} = 9.80665 \text{ Nm}$   
 $1 \text{ ft-lb} = 1.35585 \text{ Nm}$   
 $1 \text{ ft-lb} = 0.138 \text{ kg-m}$   
 $1 \text{ Nm} = \frac{0.101972 \text{ kpm}}{0.737562 \text{ ft-lb}}$   
 $1 \text{ kg-m} = \frac{9.8 \text{ Nm}}{7.23314 \text{ ft-lb}}$

### PRESSURE

$1 \text{ bar} = 100 \text{ kPa}$   
 $1 \text{ kp/cm}^2(\text{at}) = 98.0665 \text{ kPa}$   
 $1 \text{ psi} = 6.89476 \text{ kPa}$   
 $1 \text{ kPa} = \frac{0.01 \text{ bar}}{0.0101972 \text{ kp/cm}^2(\text{at})}$   
 $0.145038 \text{ psi}$

### FLOW

$1 \text{ cfm} = 0.471947 \text{ L/s} = 0.0283 \text{ m}^3/\text{min}$   
 $1 \text{ L/s} = 2.1189 \text{ cfm}$   
 $1 \text{ m}^3/\text{hr} = 0.277778 \text{ L/s}$   
 $1 \text{ m}^3/\text{hr} = 35.317 \text{ ft}^3/\text{hr} = 1000.08 \text{ L/s}$   
 $1 \text{ m}^3/\text{hr} = 0.02832 \text{ m}^3/\text{hr}$   
 $1 \text{ m}^3/\text{min} = 16.668 \text{ L/s} = 35.335 \text{ cfm}$   
 $1 \text{ cfm} = 0.0283 \text{ m}^3/\text{min}$

**Most Complete and Knowledgeable  
Supplier For You!**

# RUNDA CONTENTS

AIR HYDRAULIC RIVETER SERIES	01-02	AIR TOOL KITS SERIES	26-27
AIR IMPACT/RATCHET WRENCH SERIES	02-06	SPRAY GUNS SERIES	27-34
AIR DRILL SERIES	06-09	PUMP AND PAINT TANK SERIES	35
AIR GRINDER SERIES	09-12	MULTI-PURPOSE SPRAY GUNS	35
AIR BELT SANDER SERIES	12-13	PAINT TANK SERIES	36-37
AIR ANGLE GRINDER SERIES	13-14	WASHING GUNS SERIES	38
AIR POLISHER SERIES	14-15	SAND BLASTING GUNS SERIES	39
AIR SANDERS SERIES	15-17	TIRE INFLATING GUNS SERIES	40
AIR IMPACT SCREWDRIVER SERIES	18-19	AIR BLOW GUNS SERIES	41
AIR HAMMER SERIES	19-21	AIR NAILING GUNS SERIES	42-43
AIR CAULKING GUN SERIES	22-23	AIR FILTERS SERIES	44
AIR GREASE GUN SERIES	23-24	ACCESSORIES & COUPLER	45-46
OTHER AIR TOOLS	24-25		



# AIR HYDRAULIC RIVETER

## 3/16" AIR HYDRAULIC RIVETER

Model > **RD-F2014**

- Ultra high speed ideal for assembly line.
- Sets rivets up to 3/16" (4.8mm) in diameter.
- Up to 1,586 lbs(720kg) of pull for tough job.
- Easy operation in any position with one hand
- Front exhaust.



Hex Shank Size	Tracting Power		Storke Length		Air Inlet	Air Hose	Avg. Air Consumption		Sug. Air Comp
inch	lbs	kgs	inch	mm	(PT)	(ID)	cfm	L/min	HP
3/16" 5/32" 1/8" 3/32"	1,586	720	9/16"	14	1/4"	3/8"	3	86	0.5

Measure: 46.5x37x30/10pcs 18/16kgs

## 1/4" AIR HYDRAULIC RIVETER

Model > **RD-F2014B**

- Hydraulic piston for increased power.
- Ultra high speed ideal for assembly line.
- Sets rivets up to 1/4" (6.35mm) steel and 4.8mm stainless steel in diameter.
- Up to 1,870 lbs(850kg) of pull for tough job.
- Easy operation in any position with one hand
- Front exhaust.



Hex Shank Size	Tracting Power		Storke Length		Air Inlet	Air Hose	Air Pressure	Avg. Air Consumption	
mm	lbs	kgs	inch	mm	(PT)	(ID)	kg/cm <sup>2</sup>	cfm	L/min
1/4" 3/16" 5/32" 1/8"	1,870	850	9/16"	14	1/4"	3/8"	6-7	4	115

Measure: 59.5x35x32/10pcs 23/22kgs

## HEAVY DUTY SEMIAUTOMATIC AIR HYDRAULIC NUT RIVETER

Model > **RD-F2014C**

- Hydraulic piston for increased power.
- Ultra high speed ideal for assembly line.
- Sets rivets up to M4, M5, M6, M8, M10 steel.
- Easy operation in any position with one hand
- Front exhaust.



Capacity	Stroke	Air Consumption	Operating Pressure
			kg/cm(psi)
M4, M5, M6, M8, M10 Steel	2-10m/m	1.5 Liter/Stroke	6.0~7.0kg/cm (85~100psi)

Measure: 59.5x35x32/10pcs 25/24kgs

## AIR RIVETER

Model > **RD-F2014D**



Stainless	Aluminum	Traction Power	Avg. Air Cons	Air Inlet	Air Hose	Total Length	Recomm Air Pressure
inch	Dia	lbs	cfm	(PT)	(ID)	m/m	psi
3/32" 1/8" 5/32"	3/32" 1/8" 5/32" 3/16" Dia	1,300	3	1/4"	3/8"	230	90

# AIR HYDRAULIC RIVETER AIR IMPACT WRENCH

## 5/32" AIR RIVETER

Model > **RD-F2014E**



Stainless	Traction Power	Avg. Air Cons	Air Inlet	Air Hose	Total Length	Recomm Air Pressure
inch	lbs	cfm	(PT)	(ID)	m/m	psi
3/32" 1/8" 5/32"	1,300	3	1/4"	3/8"	230	90

## AIR HYDRAULIC RIVETER KIT

Model > **RD-F2014Z**

- Kit including 3 sizes of riveters(3/16", 5/32", 1/8", 10pcs per package) and all necessary accessories for replacement like nosepiece(3/16", 5/32", 1/8", 3/32"), nipple, oil pot return springs, o-rings, wrenches, and etc.



Measure: 49.5x34x21.5/5pcs 13/11kgs

## 1/2" AIR IMPACT WRENCH

Model > **RD-2006**

- Die cast aluminum body. Reversible.
- Adjustable torque. Rubber scuff guards on nose and back.
- Built-in air regulator varies speed & power.
- Ideal for tie changing and general assembling work and other workshop applications.
- Front exhaust.



## 1/2" HEAVY DUTY AIR IMPACT WRENCH

Model > **RD-F2031**

- Durable twin hammer impact mechanism. Pressure-feed lubrication.
- Adjustable power regulator. Easy to service two-piece construction.
- Variable speed. High Torque.
- Sheer power and performance features to tackle the toughest jobs with ease and proven durability and economy.
- Ideal for tie changing and general assembling work and other workshop applications.
- Front exhaust.



Model	Square Drive	Capacity Bolt Size		Free Speed	Max. Torque		Air Inlet	Air Hose	Avg. Air Consumption		Sug. Air Comp	Measure	Weight
	inch	inch	mm	rpm	ft-lb	N-M	(PT)	(ID)	cfm	m³/min	HP	cm/pcs	kgs
RD-F2006	1/2"	5/8"	16	7,000	230	312	1/4"	3/8"	8	0.23	2.0	38x21.5x43/10	21/20
RD-F2031	1/2"	5/8"	16	7,000	425	576	1/4"	3/8"	8	0.23	2.5	38x21.5x43/10	25/24

# AIR IMPACT WRENCH

## 3/4" AIR IMPACT WRENCH

Model > **RD-2032**

- Pistol grip for comfort and easy handing.
- Adjustable torque, reversible.
- Sheer power to tackle the toughest jobs easily.
- Ideal for spring works, pinon nut removal and major engine teardown.
- Front exhaust.



Model	Square Drive	Capacity Bolt Size		Free Speed	Max.Torque		Air Inlet	Air Hose	Avg. Air Consumption		Sug. Air Comp	Measure	Weight
	inch	inch	mm	rpm	ft-lb	N-M	(PT)	(ID)	cfm	m³/min	HP	cm/pcs	kgs
RD-F2032	3/4"	1"	25.4	4,500	500	678	1/4"	3/8"	12	0.34	3.0		
RD-F2032B	3/4"	1"	25.4	4,500	500	678	1/4"	3/8"	12	0.34	3.0	50x27.5x32.5/5	25/24

## 3/4" HEAVY DUTY AIR IMPACT WRENCH

Model > **RD-F2032B**

- Pin clutch option feature.
- Auto oiler. High torque for professional use.
- Ideal for spring works, pinon nut removal and major engine teardown.
- Sheer power to tackle the toughest jobs easily.
- Front exhaust.



## 3/8" AIR IMPACT WRENCH

Model > **RD-F2006E**

- Die cast aluminum body. Reversible.
- Adjustable torque. Rubber scuff guards on nose and back.
- Built-in air regulator varies speed & power.
- Ideal for tie changing and general assembling work and other workshop applications.
- Front exhaust.



Max. Torque	Free Speed	Air Inlet	Air Hose	Avg. Air Consumption		Sug. Air Comp
ft-lbs	rpm	(PT)	(ID)	cfm	L/min	HP
130	9,000	1/4"	3/8"	5.5	157	2.0

Measure: 33x21x33/10pcs 13/12kgs

## 3 IN 1 AIR MULTITOOL

Model > **RD-F2057**

- Triple planetary gears design, with silencer for noise reduction.
- Light weight. ball bearing construction for long life.
- Easy reversible action with paddle style trigger.
- Ideal for small engine repair, headlight and bench jobs.
- Middle exhaust.



Mode	Free Speed	Max. Operating Pressure	Measure	Weight
	rpm	bar	cm	kg
Ratchet Wrench	150	6.3	28.4x7.5x4.3	1.35
Drill	2200	6.3	25.3x7.5x4.3	1.18
Screwdriver	20,000	6.3	20.9x7.5x4.3	0.76



# AIR RATCHET WRENCH

## 3/8" AIR RATCHET WRENCH

Model > **RD-F2026A**

- Steel angle head & lightweight aluminum body.
- Most popular ratchet in the automotive industry like body shop, removing or replacing radiator spark plugs, air conditioning, water pumps.
- Also compact and powerful for running small bolts in tight places.
- Middle exhaust.



## 1/2" AIR RATCHET WRENCH

Model > **RD-F2026B**

- Steel angle head & lightweight aluminum body.
- Most popular ratchet in the automotive industry like body shop, removing or replacing radiator spark plugs, air conditioning, water pumps.
- Also compact and powerful for running small bolts in tight places.
- Middle exhaust.



## 1/4" AIR RATCHET WRENCH

Model > **RD-2026C**

- Triple planetary gears design, with silencer for noise reduction.
- Light weight. ball bearing construction for long life.
- Easy reversible action with paddle style trigger.
- Ideal for small engine repair, headlight and bench jobs.
- Middle exhaust.



## 17pcs AIR RATCHET WRENCH KIT

Model > **RD-F2026Z**

- 1pc-3/8" air ratchet wrench RD-F2026A
- 7pc-air sockets 9, 10, 11, 13, 14, 17, 19mm
- 1pc-3/8" x 3" extension bar
- 1pc-U-joint
- 1pc-bit holder
- 1pc-oil pot
- 3pcs-bits
- 1pc-nipple
- 1pc-blow mold case



## 1/4" AIR RATCHET WRENCH

Model > **RD-2026D**

- Triple planetary gears design, with silencer for noise reduction.
- Light weight. ball bearing construction for long life.
- Easy reversible action with paddle style trigger.
- Ideal for small engine repair, headlight and bench jobs.
- Middle exhaust.



Model	Square Drive	Capacity Bolt Size		Free Speed	Max.Torque		Air Inlet	Air Hose	Avg. Air Consumption		Sug. Air Comp	Measure	Weight
	inch	inch	mm	rpm	ft-lb	N-M	(PT)	(ID)	cfm	m³/min	HP	cm/pcs	kgs
RD-F2026A	3/8"	3/8"	10	160	50	69	1/4"	3/8"	4	0.11	1.5	30x27x25.5/20	21/20
RD-F2026B	1/2"	1/2"	13	160	50	69	1/4"	3/8"	4	0.11	1.5	30x27x25.5/20	21/20
RD-2026C	1/4"	1/4"	15	160	50	69	1/4"	3/8"	4	0.11	1.5	30x27x25.5/20	13/12
RD-2026D	1/4"	1/4"	15	250	50	69	1/4"	3/8"	4	0.11	1.5	-	-

## 17PC 1/2" AIR IMPACT & RATCHET WRENCH KIT

Model > **RD-F2026BZ**

- 1pc-1/2" air impact wrench RD-F2006
- 1pc-3/8" air ratchet wrench RD-F2026A
- 10pc-air sockets 9, 10, 13, 14, 17, 19, 22, 24, 27mm
- 1pc-mini oiler
- 1pc-hex wrench
- 1pc-oil pot
- 1pc-nipple
- 1pc-blow mold case



## 17PC 1/2" AIR IMPACT WRENCH KIT

Model > **RD-F2006Z**

- 1pc-1/2" air impact wrench RD-F2006
- 10pc-impact sockets 9, 10, 11, 13, 14, 17, 19, 22, 24, 27mm
- 1pc-1/2" dr.x5" extension bar
- 1pc-hex key wrench
- 1pc-nipple
- 1pc-mini oiler
- 1pc-oil pot
- 1pc-blow mold case



## 17PC 1/2" AIR IMPACT WRENCH KIT

Model > **RD-F2031Z**

- 1pc-1/2" air impact wrench RD-F2031
- 10pc-air sockets 9, 10, 11, 13, 14, 17, 19, 22, 24, 27mm
- 1pc-1/2" dr.x5" extension bar
- 1pc-mini oiler
- 1pc-hex wrench
- 1pc-oil pot
- 1pc-nipple
- 1pc-blow mold case



## 13PC 3/4" AIR IMPACT WRENCH KIT

Model > **RD-F2614Z**

- 1pc-3/4" air impact wrench RD-F2032
- 8pcs-impact sockets: 26, 27, 29, 30, 32, 35, 36, 38mm
- 1pc-hex key wrench
- 1pc-nipple
- 1pc-oil pot
- 1pc-blow mold case



# AIR WRENCH KIT AIR DRILLS

## 1/4" AIR RATCHET WRENCH KIT

Model > **RD-F2026DZ**

- 1pc-1/4" air impact wrench RD-F2026D
- 9pcs-sockets (5.5mm/6/7/8/9/10/11/12/13)
- 12pcs-screwdriver bits 25mm (1xPH/1xPH2/HEX 3/4/5/6/7 T10/T15/T20/T25/T30)
- 1pc-extension piece 100mm
- 1pc-adapter 1/4" square to 1/4" hexagonal
- 1pc-oil bottle
- 1pc-connector nipple 6.35mm (1/4")
- 1pc-blow mold case



## 3 IN 1 AIR MULTITOOl KIT

Model > **RD-F2057Z**

- 1pc-1/4" air ratchet wrench RD-F2057
- 1pc-air drill head
- 1pc-air grinder head
- 1pc-hex wrench
- 2pcs-hand wrenches
- 1pc-drill chuck key
- 1pc-oil pot
- 1pc-nipple
- 1pc-blow mold case



## 3/8" REVERSIBLE AIR DRILL

Model > **RD-F2002**

- Durable lightweight aluminum housing.
- Convenient one-hand operation with side mounted F/R lever.
- Ergonomic choice for drilling, honing, and hole sawing.
- Handle exhaust.



Drilling Cap	Free Speed	Air Inlet	Air Hose	Avg. Air Consumption		Sug. Air Comp
inch	rpm	(PT)	(ID)	cfm	L/min	HP
3/8"	1,800	1/4"	3/8"	6	170	2.0

Measure: 41x26.5x26/10pcs 11/9kgs

## 1/2" REVERSIBLE AIR DRILL

Model > **RD-F2002D**

- Convenient side mounted F/R lever.
- Variable speed throttle.
- Heavy duty ball and needle bearing.
- More power and longer life.
- Powerful choice for drilling, honing and hole sawing.
- Handle exhaust.



Drilling Cap	Free Speed	Air Inlet	Air Hose	Avg. Air Consumption		Sug. Air Comp
inch	rpm	(PT)	(ID)	cfm	L/min	HP
1/2"	700	1/4"	3/8"	8	226	2.0

Measure: 41x26.5x26/10pcs 11/9kgs

## 3/8" REVERSIBLE AIR DRILL

Model > **RD-F2002**

- Durable lightweight aluminum housing.
- Convenient one-hand operation with side mounted F/R lever.
- Ergonomic choice for drilling, honing, and hole sawing.
- Handle exhaust.



Drilling Cap	Free Speed	Air Inlet	Air Hose	Avg. Air Consumption		Sug. Air Comp
inch	rpm	(PT)	(ID)	cfm	L/min	HP
3/8"	1,800	1/4"	3/8"	6	170	2.0

Measure: 41x26.5x26/10pcs 11/9kgs

## 3/8" KEYLESS REVERSIBLE AIR DRILL

Model > **RD-F2002A**

- Durable lightweight aluminum housing.
- Convenient one-hand operation with side mounted F/R lever.
- Keyless chuck for fast and easy bit changes.
- Ergonomic choice for drilling, honing, and hole sawing.
- Handle exhaust.



Drilling Cap	Free Speed	Air Inlet	Air Hose	Avg. Air Consumption		Sug. Air Comp
inch	rpm	(PT)	(ID)	cfm	L/min	HP
3/8"	1,800	1/4"	3/8"	6	170	2.0

Measure: 41x26.5x26/10pcs 11/9kgs

## 3/8" AIR DRILL

Model > **RD-F2002B**

- Durable lightweight aluminum housing.
- Ergonomic choice for drilling, honing, and hole sawing.
- Handle exhaust.



Model	Drilling Cap	Free Speed	Air Inlet	Air Hose	Avg. Air Consumption		Sug. Air Comp	Measure	Weight
	inch	rpm	(PT)	(ID)	cfm	L/min	HP	cm/pcs	kgs
RD-F2002B	3/8"	2,000	1/4"	3/8"	6	170	2.0	41x26.5x26/10	11/9
RD-F2002D	1/2"	700	1/4"	3/8"	8	226	2.0	43x27.5x30/10	15/13

## 1/2" REVERSIBLE AIR DRILL

Model > **RD-F2002D**

- Convenient side mounted F/R lever.
- Variable speed throttle.
- Heavy duty ball and needle bearing.
- More power and longer life.
- Powerful choice for drilling, honing and hole sawing.
- Handle exhaust.



## 1/2" KEYLESS REVERSIBLE AIR DRILL

Model > **RD-F2002E**

- Convenient side mounted F/R lever.
- Heavy duty ball and needle bearing.
- Keyless chuck for fast and easy bit changes.
- More power and longer life.
- Powerful choice for drilling, honing and hole sawing.
- Handle exhaust.



## 3/8" ANGLE AIR DRILL

Model > **RD-F2018B**

- Safety lever trigger prevents accidental starts.
- Right-angle head for working in confined areas.
- Rear speed regulator and adjustable exhaust deflector.
- Functions as a grinder when fitted with grinding accessories and also as a high-speed drill when fitted with a drill for wood-working.
- Rear exhaust.



Model	Drilling Cap	Free Speed	Air Inlet	Air Hose	Avg. Air Consumption		Sug. Air Comp	Measure	Weight
	inch	rpm	(PT)	(ID)	cfm	L/min	HP	cm/pcs	kgs
RD-F2002E	1/2"	700	1/4"	3/8"	8	226	2.0	43x27.5x30/10	15/13
RD-F2018B	3/8"	15,000	1/4"	3/8"	4	116	2.0	43x26.5x26/10	11/9

## 3/8" AIR STRAIGHT DRILL

Model > **RD-F2018**

- Variable speed throttle for easy starts.
- Quiet operation.
- Ideal for in hard-to reach areas.
- Good choice for drilling, honing, and hole sawing.
- Rear exhaust.



## 3/8" AIR STRAIGHT DRILL

Model > **RD-F2018A**

- Variable speed throttle for easy starts.
- Quiet operation.
- Ideal for in hard-to reach areas.
- Good choice for drilling, honing and hole sawing.
- Rear exhaust.



Drilling Cap	Free Speed	Air Inlet	Air Hose	Avg. Air Consumption		Sug. Air Comp
inch	rpm	(PT)	(ID)	cfm	L/min	HP
3/8"	2,600	1/4"	3/8"	6	170	2.0

Measure: 28.5x25x23/20pcs 14/13kgs

Drilling Cap	Free Speed	Air Inlet	Air Hose	Avg. Air Consumption		Sug. Air Comp
inch	rpm	(PT)	(ID)	cfm	L/min	HP
3/8"	20,000	1/4"	3/8"	6	170	2.0

Measure: 28.5x25x23/20pcs 14/13kgs



# AIR DRILLS AIR DIE GRINDER

## 3/8" REVERSIBLE AIR DRILL KIT

Model > **RD-F2002Z**

- 1pc - 3/8" reversible air drill RD-F2002
- 1pc - drill chuck key
- 1pc - nipple
- 4pcs - screwdriver bits
- 1pc - blow mold case
- Packing: blow mold case



Measure: 55x25x23/10pcs 10/11kgs

## 1/2" KEYLESS REVERSIBLE AIR DRILL KIT

Model > **RD-F2002EZ**

- 1pc - 1/2" reversible air drill RD-F2002E
- 1pc - multi-direction auxiliary handle
- 1pc - drill chuck key
- 1pc - nipple
- 1pc - blow mold case
- Packing: blow mold case



Measure: 58x31x20.7/10PCS 15/17kgs

## 1/4" MINI AIR DIE GRINDER (1/4"/6mm)

Model > **RD-F2004**

- Also available for 1/8" (3mm) collect (optional).
- Used with a variety of accessories for weld breaking , smoothing sharp edges, deburring, polishing and grinding.
- Front exhaust.



## MINI AIR DIE GRINDER (1/4"/6mm)

Model > **RD-F2005**

- Also available for 1/8" (3mm) collect (optional).
- Used with a variety of accessories for weld breaking , smoothing sharp edges, deburring, polishing and grinding.
- Rear exhaust.



Model	Capacity	Free Speed	Air Inlet	Air Hose	Avg. Air Consumption		Sug. Air Comp	Measure	Weight
					cfm	L/min			
RD-F2004	1/4"/6mm	25,000	1/4"	3/8"	3	86	1.5	20x18x22.5/20	8/7
RD-F2005	1/4"/6mm	25,000	1/4"	3/8"	4	115	1.5	20x18x22.5/20	10/9

## AIR DIE GRINDER (1/4" /6mm)

Model > **RD-F2011**

- Lever block trigger for safety.
- Built-in regulator.
- Also available for 1/8" (3mm) collect (optional).
- Used with a variety of accessories for weld breaking , smoothing sharp edges, deburring, polishing and grinding.
- Rear exhaust.



## 1/4" (6mm) AIR ANGLE DIE GRINDER

Model > **RD-F2021**

- Lever block trigger for safety.
- Angle head provides easy access into tight space.
- Also available for 1/8" (3mm) collect (optional).
- Used with a variety of accessories for weld breaking , smoothing sharp edges, deburring, polishing and grinding.
- Rear exhaust.



Model	Capacity	Free Speed	Air Inlet	Air Hose	Avg. Air Consumption		Sug. Air Comp	Measure	Weight
	inch/mm				cfm	L/min			
RD-F2011	1/4"/6mm	22,000	1/4"	3/8"	4	115	1.5	32.5x20x26.5/20	16/15
RD-F2021	1/4"/6mm	20,000	1/4"	3/8"	3	115	1.5	43.5x19x19.5/20	13/12

## 120° AIR ANGLE DIE GRINDER

Model > **RD-F2021D**

- Safety lever throttle.
- Lightweight and compact for easy handling
- Ideal for light sanding, removing rust, and smoothing welds.



## 16pcs 1/4" (6mm) AIR DIE GRINDER KIT

Model > **RD-F2004Z**

- 1 pc - mini air die grinder RD-F2004
- 2pcs - hand wrenches
- 1 pc - (1/8")3mmcollet
- 5pcs - 1/4"(6mm)shank grinding stones
- 5pcs - 1/8"(3mm)shank grinding stones
- 1 pc - nipple
- 1 pc - blow mold case



Free Speed	Air Inlet	Air Hose	Avg. Air Consumption		Sug. Air Comp
rpm	(PT)	(ID)	cfm	L/min	HP
18,000rpm	1/4"	3/8"	4	115	1.5

Measure: 30x19x26/20pcs

# AIR DIE GRINDER KIT

## 16pcs 1/4" (6mm) AIR DIE GRINDER KIT

Model > **RD-F2005Z**

- 1pc - air die grinder RD-F2005
- 2pcs - hand wrenches
- 1pc - (1/8")3mmcollet
- 5pcs - 1/4"(6mm)shank grinding stones
- 5pcs - 1/8"(3mm)shank grinding stones
- 1pc - nipple
- 1pc - blow mold case



## 16pcs 1/4" (6mm) AIR DIE GRINDER KIT

Model > **RD-F2011Z**

- 1pc - air die grinder RD-F2011
- 2pcs - hand wrenches
- 1pc - (1/8")3mmcollet
- 5pcs - 1/4"(6mm)shank grinding stones
- 5pcs - 1/8"(3mm)shank grinding stones
- 1pc - nipple
- 1pc - blow mold case



## 16pcs 1/4" (6mm) AIR DIE GRINDER KIT

Model > **RD-F2021Z**

- 1pc - air die grinder RD-F2021
- 2pcs - hand wrenches
- 1pc - (1/8")3mmcollet
- 5pcs - 1/4"(6mm)shank grinding stones
- 5pcs - 1/8"(3mm)shank grinding stones
- 1pc - nipple
- 1pc - blow mold case



## 7pcs AIR MICRO DIE GRINDER KIT

Model > **RD-F2013A**

- 1pc - air micro die grinder
- 2pcs - hand wrenches
- 1pc - oil pot
- 1pc - mini oiler
- 1pc - nipple
- 1pc - blow mold case



# AIR DIE GRINDERS KIT AIR BELT SANDER

## 17pcs AIR MICRO DIE GRINDER KIT

Model > **RD-F2013B**

- 1pc - air micro die grinder
- 2pcs - hand wrenches
- 1pc - oil pot
- 1pc - mini oiler
- 1pc - nipple
- 10pcs - grinding stones
- 1pc - blow mold case



## 3" AIR CUT OFF TOOL

Model > **RD-F2010**

- Lever block trigger for safety.
- Chrome-plated steel guard protects you from sparks at operation.
- To cut off mufflers, tail pipes and tolts quickly and efficiently.
- Rear exhaust.



Free Speed	Cutting Wheel	Air Inlet	Air Hose	Avg. Air Consumption		Sug. Air Comp
rpm	mm	(PT)	(ID)	cfm	L/min	HP
18,000	76	1/4"	3/8"	4	115	1.5

Measure: 49x43x20.5/20pcs 14/13kgs

## 10mm AIR BELT SANDER

Model > **RD-F2022**

- The smallest handy belt sander with 10mm wide belt.
- Lever throttle for featuring control.
- Easy belt replacement.
- Suitable for jobs in narrow spaes and recessed corners.
- Helps you to do fine sanding jobs like wood-working, furniture-polishing, plastic, aluminum & metal-polishing and even small spot sanding jobs like trimes, curves and other difficult-to-reach spots for common sanding machines.
- 3 different grit sanding belts(60, 80, 120 grit) included for different stage of sanding.
- Rear exhaust.



Free Speed	Belt Size	Air Inlet	Air Hose	Avg. Air Consumption		Sug. Air Comp
rpm	mm	(PT)	(ID)	cfm	L/min	HP
16,000	2/5"x13"/10x330mm	1/4"	3/8"	6	171	1.5

Measure: 49.5x32x25.5/10pcs 18/16kgs

## 20mm AIR BELT SANDER

Model > **RD-F2022B**

- Lever throttle for featuring control.
- Easy belt replacement.
- Suitable for jobs in broad spaces.
- Helps you to do fine sanding jobs like wood-working, furniture-polishing, plastic, aluminum & metal-polishing and even small spot sanding jobs like trimes, curves and other difficult-to-reach spots for common sanding machines.
- 3 different grit sanding belts(60, 80, 120 grit) included for different stage of sanding.
- Rear exhaust.



Free Speed	Belt Size	Air Inlet	Air Hose	Avg. Air Consumption		Sug. Air Comp
rpm	mm	(PT)	(ID)	cfm	L/min	HP
16,000	4/5"x13"/20x330mm	1/4"	3/8"	7	200	1.5

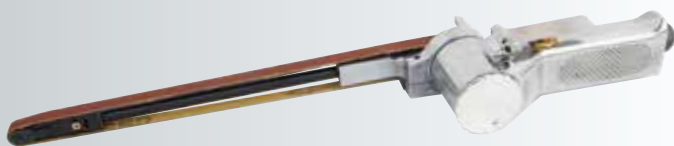
Measure: 49.5x31.5x24.5/10pcs 14/13kgs

# AIR BELT SANDER AIR ANGLE GRINDER

## 10mm LONG AIR BELT SANDER

Model > **RD-F2022C**

- The smallest handy belt sander but with extra length 600mm(23.6") belt.
- Lever throttle for featuring control.
- Easy belt replacement.
- Suitable for jobs in narrow spaces and recessed corners.
- Helps you to do fine sanding jobs like wood-working, furniture-polishing, plastic, aluminum & metal-polishing and even small spot sanding jobs like trimes, curves and other difficult-to-reach spots for common sanding machines.
- 3 different grit sanding belts(60, 80, 120 grit) included for different stage of sanding.
- Rear exhaust.



Free Speed	Belt Size	Air Inlet	Air Hose	Avg. Air Consumption		Sug. Air Comp
rpm	mm	(PT)	(ID)	cfm	L/min	HP
16,000	2/5"x23.6"/10x600mm	1/4"	3/8"	6	171	1.5

Measure: 42x38.5x38/10pcs 18/16kgs

## 60mm AIR COMPACT MULTI-SANDER

Model > **RD-F2022D**



Free Speed	Belt Size	Air Inlet	Air Hose	Avg. Air Consumption		Sug. Air Comp
rpm	mm	(PT)	(ID)	cfm	L/min	HP
800	2.36x10.43/60x265mm	1/4"	3/8"	6	171	-

Measure: 39x24x27.5/6pcs 9/8kgs

## 4" AIR ANGLE GRINDER

Model > **RD-F2009**

- Safety lever throttle.
- Built-in regulator adjusts speed for various applications.
- Auxiliary side handle for greater comfort and control.
- Ideal for cleaning, deburring and grinding operations.
- Side exhaust.



Free Speed	Air Inlet	Air Hose	Avg. Air Consumption		Sug. Air Comp
rpm	(PT)	(ID)	cfm	L/min	HP
11,000	1/4"	3/8"	6	171.6	2.5

Measure: 50.5x22.5x27/10pcs 17/15kgs

## 5" AIR ANGLE GRINDER

Model > **RD-2041**

- Safety lever throttle.
- Built-in regulator adjusts speed for various applications.
- Auxiliary side handle for greater comfort and control.
- Ideal for cleaning, deburring and grinding operations.
- Side exhaust.



Free Speed	Sanding Pad	Air Inlet	Air Hose	Avg. Air Consumption		Sug. Air Comp
rpm	inch/mm	(PT)	(ID)	cfm	L/min	HP
10,000	5"/127	1/4"	3/8"	12	340	3.0

Measure: 50.5x22.5x27/10pcs 17/15kgs



# AIR ANGLE GRINDER AIR POLISHER

## 5" (4-1/2") AIR ANGLE GRINDER

Model > **RD-5B**

- Safety lever throttle.
- Built-in regulator adjusts speed for various applications.
- Auxiliary side handle for greater comfort and control.
- Complete with governor mechanism.
- Hardened steel beveled gears for longer tool life.
- Designed for removing rust and smoothing welds.
- Also available use with 4-1/2" grinding disc.
- Side exhaust.



Free Speed	Air Inlet	Air Hose	Avg. Air Consumption		Sug. Air Comp
rpm	(PT)	(ID)	cfm	L/min	HP
11,000	1/4"	3/8"	6	171.6	2.5

Measure: 44x22x38/10pcs 21/20kgs

## 7" AIR POLISHER

Model > **RD-7B**

- Lever throttle trigger.
- Built-in regulator.
- Auxiliary handle can be mounted on either side for comfort and control.
- Planetary gearing balances load on bearings and gears for greater power.
- Heavy duty motor handles tough jobs.
- Complete with 7" backing pad.
- A high free speed range of 1500-2500 for buffing and polishing a wide range of surfaces of paint, metal and plastic to a high-gloss and professional finish.
- Side exhaust.



Free Speed	Sanding Pad	Air Inlet	Air Hose	Avg. Air Consumption		Sug. Air Comp
rpm	inch/mm	(PT)	(ID)	cfm	L/min	HP
3,000	7"/178	1/4"	3/8"	12	340	3.0

Measure: 37.5x36.5x37/10pcs 20/19kgs

## 7" AIR ANGLE SANDER

Model > **RD-F2044**

- Lever throttle trigger.
- Built-in regulator.
- Auxiliary handle can be mounted on either side for comfort and control.
- Planetary gearing balances load on bearings and gears for greater power.
- Heavy duty motor handles tough jobs.
- Complete with 7" backing pad.
- A high free speed range of 1500-2500 for buffing and polishing a wide range of surfaces of paint, metal and plastic to a high-gloss and professional finish.
- Side exhaust.



Free Speed	Sanding Pad	Air Inlet	Air Hose	Avg. Air Consumption		Sug. Air Comp
rpm	inch/mm	(PT)	(ID)	cfm	L/min	HP
4,500	7"/178	1/4"	3/8"	12	340	3.0

Measure: 37.5x36.5x37/10pcs 20/19kgs

## 7" VERTICAL AIR POLISHER

Model > **RD-F2043**



Free Speed	Sanding Pad	Air Inlet	Air Hose	Avg. Air Consumption		Sug. Air Comp
rpm	inch/mm	(PT)	(ID)	cfm	L/min	HP
2,000	7"/178	1/4"	3/8"	6	171.6	3.0

Measure: 40x23x20/5pcs 12/11kgs

## 6" DUALACTION AIR SANDER

Model > **RD-F2020C**

- Swivel-free finishes from its dual action pad motion.
- Built-in regulator for positive speed control.
- Orbital sander provides a patternless finish.
- Rotary action assures smooth and circulating sanding.
- Most suitable for sanding jobs like feather edging, metal preparation and blending body filler.
- Velcro pad and vinyl pad optional.
- Side exhaust.



Free Speed	Sanding Pad	Air Inlet	Air Hose	Avg. Air Consumption		Sug. Air Comp
rpm	inch/mm	(PT)	(ID)	cfm	L/min	HP
10,000	6"/152	1/4"	3/8"	4	115	2.0

Measure: 40.5x25x33/10pcs 20/18kgs

## 6" AIR D.A.Q. SANDER

Model > **RD-F2020**

- Swivel-free finishes from its dual action pad motion.
- Built-in regulator for positive speed control.
- Orbital sander provides a patternless finish.
- Rotary action assures smooth and circulating sanding.
- Most suitable for sanding jobs like feather edging, metal preparation and blending body filler.
- Velcro pad and vinyl pad optional.
- Side exhaust.



Free Speed	Sanding Pad	Air Inlet	Air Hose	Avg. Air Consumption		Sug. Air Comp
rpm	inch/mm	(PT)	(ID)	cfm	L/min	HP
10,000	6"/152	1/4"	3/8"	4	115	2.0

Measure: 55x26.5x32.5/10pcs 15/14kgs

## 5" RANDOM ORBIT SANDER

Model > **RD-F2020E**

- Built-in regulation for speed control.
- Low vibration, lightweight and ergonomic design.
- 3/32" orbit pattern.
- Uses vinyl pads for PSA paper or velcro pads for velcro disk.
- Ideal for producing fine finishes on wood, metal, fiberglass and other compound materials.
- Rear exhaust.



Free Speed	Sanding Pad	Air Inlet	Air Hose	Avg. Air Consumption		Sug. Air Comp
rpm	inch/mm	(PT)	(ID)	cfm	L/min	HP
9,000	5"/125	1/4"	3/8"	12	340	2.0

Measure: 66x19x25/10pcs 15/14kgs

## 5" RANDOM ORBIT SANDER (VACUUM TYPE)

Model > **RD-F2020F**

- Built-in regulation for speed control.
- Low vibration, lightweight and ergonomic design.
- 3/32" orbit pattern.
- Fitted with five inch (or six inch) 6 hole velcro pad.
- Ideal for producing fine finishes on wood, metal, fiberglass and other compound materials.
- Dust tube and dust collecting bag included.
- Rear exhaust.



Free Speed	Sanding Pad	Air Inlet	Air Hose	Avg. Air Consumption		Sug. Air Comp
rpm	inch/mm	(PT)	(ID)	cfm	L/min	HP
9,000	5"/125	1/4"	3/8"	12	340	2.0

Measure: 66x19x25/10pcs 15/14kgs

## 5" RANDOM ORBIT SANDER

Model > **RD-F2020G**

- Built-in regulation for speed control.
- Low vibration, lightweight and ergonomic design.
- 3/32" orbit pattern.
- Uses vinyl pads for PSA paper or velcro pads for velcro disk.
- Ideal for producing fine finishes on wood, metal, fiberglass and other compound materials.
- Rear exhaust.



Free Speed	Sanding Pad	Air Inlet	Air Hose	Avg. Air Consumption		Sug. Air Comp
rpm	inch/mm	(PT)	(ID)	cfm	L/min	HP
9,000	5"/125	1/4"	3/8"	12	340	2.0

Measure: 66x19x25/10pcs 15/14kgs

## 6" RANDOM ORBIT SANDER (VACUUM TYPE)

Model > **RD-F2060**

- Built-in regulation for speed control.
- Low vibration, lightweight and ergonomic design.
- 3/32" orbit pattern.
- Fitted with five inch (or six inch) 6 hole velcro pad.
- Ideal for producing fine finishes on wood, metal, fiberglass and other compound materials.
- Dust tube and dust collecting bag included.
- Rear exhaust.



Free Speed	Sanding Pad	Air Inlet	Air Hose	Avg. Air Consumption		Sug. Air Comp
rpm	inch/mm	(PT)	(ID)	cfm	L/min	HP
10,500	6"/150	1/4"	3/8"	12	340	2.0

Measure: 66x19x25/10pcs 15/14kgs

## 3" AIR SANDER

Model > **RD-F2049**

- Designed for light sanding jobs like feather edging, and rust removal.
- Side exhaust.



Free Speed	Sanding Pad	Air Inlet	Air Hose	Avg. Air Consumption		Sug. Air Comp
rpm	inch/mm	(PT)	(ID)	cfm	L/min	HP
2,500	73	1/4"	3/8"	-	-	-

Measure: 30.5x20x31/10pcs

## AIR MULTI TOOL

Model > **RD-F2058**

- Combination cutter, scraper, grinder and sander.
- For use on wood, soft metals, plastics, drywall, grout, fabrics and more.
- Variable speed control.
- Side exhaust.



Max. Speed	Max. Operating Pressure	Air Inlet
rpm	bar	(PT)
18,000	6.3	1/4"

## STRAIGHT LINE AIR SANDER

Model > **RD-F2027**

- Dual cylinder, 25mm stroke length, 2500 SPM for rapid material removal.
- Positive locking clamps hold sand paper secure.
- Low noise and vibration levels.
- The dual piston makes the sander ideal for finishing body filler.
- No dead point design for comfortable operation on plastic fillers at any stage of hardening, and feathers with ease and smoothness.
- Side exhaust.



Free Speed	Sanding Pad	Air Inlet	Air Hose	Avg. Air Consumption		Sug. Air Comp
rpm	inch/mm	(PT)	(ID)	cfm	L/min	HP
2,500	2-1/2"x16"/64x407mm	1/4"	3/8"	6	170	2.0

Measure: 42x38x38/10pcs 21/20kgs

## AIR ORBITAL SANDER

Model > **RD-F2023**

- Balanced ball bearing construction.
- Built-in regulator for positive speed control.
- Positive locking clamps hold sand paper firmly in position.
- Automatic release throttle lever with positive stop action.
- Contoured palm-grip for one-hand operation.
- Make fast work of smoothing fiberglass, wood and body filler and take care of any sanding job on paint, metal and fiberglass.
- Rear exhaust.



Free Speed	Sanding Pad	Air Inlet	Air Hose	Avg. Air Consumption		Sug. Air Comp
rpm	inch/mm	(PT)	(ID)	cfm	L/min	HP
8,000	6.9x3.75/175x95mm	1/4"	3/8"	6	171.6	2.5

Measure: 53x21.5x32.5/10pcs 21/19kgs

## AIR MULTI TOOL KIT

Model > **RD-F2058Z**

- 1pc - air multi tool RD-F2058
- 1pc - plunge saw blade(32mm)
- 1pc - sanding plate
- 1pc - segment saw blade
- 1pc - scraper
- 6pcs - sanding sheets for sanding wood (80/120/240)
- 1pc - connector nipple 6.35mm(1/4")
- 1pc - oil bottle
- 1pc - hex key
- 1pc - blow mold case



## 3" MINI POLISHER KIT

Model > **RD-F2049Z**

- 1pc - mini polisher
- 1pc - sanding pad
- 3pcs - buffing pad
- 1pc - hand wrenches
- 1pc - nipple
- 1pc - blow mold case



# AIR IMPACT SCREWDRIVER

## AIR IMPACT SCREWDRIVER (DOUBLE HAMMER)

### Model > RD-F1C

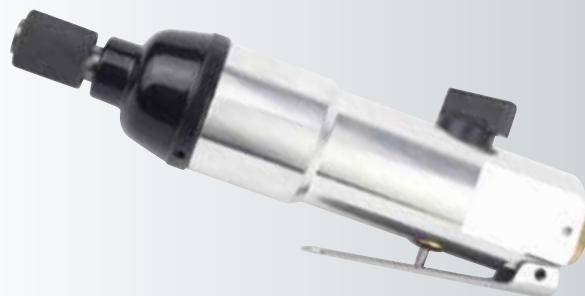
- Durable aluminum housing.
- High torque removes tight screws easily.
- Air regulator for positive speed control.
- Light & left switch.
- Quick-change chuck uses 1/4" (6.4mm) hex bits.
- Suitable for screws 3.0mm max.
- Side exhaust.



## HEAVY DUTY AIR IMPACT SCREWDRIVER (DOUBLE HAMMER)

### Model > RD-F1D

- Reversible switch. Screw size 4.0mm.
- Rear exhaust.



Model	Hex.Shank Size		Capacity		Free Speed	Max.Torque		Air Inlet	Air Hose	Avg. Air Consumption		Sug. Air Comp	Measure	Weight
	inch	mm	inch	mm	rpm	in-lbs	kgs-cm	(PT)	(ID)	cfm	L/min	HP	cm/pcs	kgs
RD-F1C	1/4"	6.35	5/32"-33/16"	4-5	8,000	20-60	23-69	1/4"	3/8"	6	170	2.0	28.5x26x25/10	21/20
RD-F1D	1/4"	6.35	5/32"-33/16"	4-5	8,000	30-80	34-90	1/4"	3/8"	6	170	1.5	28.5x26x25/20	21/20

## AIR IMPACT SCREWDRIVER (DOUBLE HAMMER)

### Model > RD-F2015

- Durable and lightweight aluminum housing.
- Variable speed throttle for easy start.
- Convenient one hand operation with side mounted F/R lever
- Suitable for screws 4.0mm max.
- Handle exhaust.



## AIR IMPACT SCREWDRIVER

### Model > RD-F2048

- Reversible switch. Screw size M4-M6/M6-M8
- Rear exhaust.



Model	Hex.Shank Size		Capacity		Free Speed	Max.Torque			Air Inlet	Air Hose	Avg. Air Consumption		Sug. Air Comp	Measure	Weight
	inch	mm	inch	mm	rpm	in-lbs	kgs-cm	N.m	(PT)	(ID)	cfm	L/min	HP	cm/pcs	kgs
RD-F2015	1/4"	6.35	5/32"	4	10,000	20-60	23-69	-	1/4"	3/8"	5	142	1.5	51.5x35x18.5/20	22/20
RD-F2048	1/4"	6.35	M4-M6/M6-M8		2,000/800	-	-	14/18	1/4"	-	6.3		1.5	42x38x38/10	21/20



## AIR IMPACT SCREWDRIVER

Model > **RD-F1F**

- Quick-change chuck uses 1/4"(6.4mm)hex bits.
- Suitable for screws 3.0mm max.
- Side exhaust.



Hex. Shank Size		Capacity		Free Speed	Max.Torque		Air Inlet	Air Hose	Avg. Air Consumption		Sug. Air Comp
inch	mm	inch	mm	rpm	in-lbs	kgs-cm	(PT)	(ID)	cfm	L/min	HP
1/4"	6.35	5/32"	4	10,000	20-60	23-69	1/4"	3/8"	5	142	1.5

Measure: 51.5x35x18.5/20pcs 22/20kgs

## 190MM AIR HAMMER

Model > **RD-F2012A-190**

- Hardened steel barrel and piston for less wear and longer life.
- Light weight aluminum pistol-grip housing.
- Built-in power regulator and trigger control.
- A must for general cutting, chipping and scraping.
- Round type, 5 chisels included.
- Front exhaust.



Chisel Shank		Bore Diameter		Blow Per Min	Air Inlet	Air Hose	Avg. Air Consumption		Sug. Air Comp
inch	mm	inch	mm	rpm	(PT)	(ID)	cfm	L/min	HP
0.401	10.185	3/4"	19.05	3,000	1/4"	3/8"	5.5	157	2.0

Measure: 29x25x32/10pcs

## 150MM AIR HAMMER

Model > **RD-F2012B-150**

- Hardened steel barrel and piston for less wear and longer life.
- Light weight aluminum pistol-grip housing.
- Built-in power regulator and trigger control.
- A must for general cutting, chipping and scraping.
- Round type, 4 chisels included.
- Front exhaust.



Chisel Shank		Bore Diameter		Blow Per Min	Air Inlet	Air Hose	Avg. Air Consumption		Sug. Air Comp
inch	mm	inch	mm	rpm	(PT)	(ID)	cfm	L/min	HP
0.401	10.185	3/4"	19.05	4,500	1/4"	3/8"	5	143	2.0

Measure: 32.5x20x29.5/10pcs

## 250MM AIR HAMMER

Model > **RD-F2012C-250**

- Hardened steel barrel and piston for less wear and longer life.
- Light weight aluminum housing.
- Built-in power regulator and trigger control.
- A must for general cutting, chipping and scraping.
- Round type, 5 chisels included.
- Front exhaust.



Piston Diameter	Blow Per Min	Air Inlet	Air Hose	Air Pressure	Avg. Air Consumption	
mm	rpm	(PT)	(ID)	kg-cm	cfm	m³/min
19	2000	1/4"	3/8"	6.3	7.5	0.21

Measure: 36x23.5x28/10pcs 26/25kgs

## 190MM AIR HAMMER

Model > **RD-F2012A-190**

- Hardened steel barrel and piston for less wear and longer life.
- Light weight aluminum housing.
- Built-in power regulator and trigger control.
- A must for general cutting, chipping and scraping.
- Round type, 5 chisels included.
- Front exhaust.



Chisel Shank		Bore Diameter		Blow Per Min	Air Inlet	Air Hose	Avg. Air Consumption		Sug. Air Comp
inch	mm	inch	mm	rpm	(PT)	(ID)	cfm	L/min	HP
0.401	10.185	3/4"	19.05	3,000	1/4"	3/8"	5.5	157	2.0

Measure: 29x25x32/10pcs 25/24kgs

## 150MM AIR HAMMER

Model > **RD-F2012B-150**

- Hardened steel barrel and piston for less wear and longer life.
- Light weight aluminum housing.
- Built-in power regulator and trigger control.
- A must for general cutting, chipping and scraping.
- 4 round chisels included.
- Front exhaust.



Chisel Shank		Bore Diameter		Blow Per Min	Air Inlet	Air Hose	Avg. Air Consumption		Sug. Air Comp
inch	mm	inch	mm	rpm	(PT)	(ID)	cfm	L/min	HP
0.401	10.185	3/4"	19.05	4,500	1/4"	3/8"	5	143	2.0

Measure: 32.5x20x29.5/10pcs 16/14kgs

## RUST REMOVAL

Model > **RD-F2056B**



Needle Qty	Blow Permin	Stroke Length
pcs	rpm	mm
19	2,800	24

## RUST REMOVAL

Model > **RD-2056**



- Hardened steel barrel and piston for less wear and longer life.
- Light weight aluminum housing.
- Built-in power regulator and trigger control.
- A must for general cutting, chipping and scraping.
- 4 round chisels included.
- Front exhaust.

Needle Qty	Blow Permin	Stroke Length	Air Inlet	Air Hose
pcs	rpm	mm	(PT)	(ID)
12	2,800	24	1/4"	3/8"

Measure: 38x27x34/10pcs 19/18kgs

# AIR HAMMER KIT

## RUST REMOVAL (HEAVY DUTY)

Model > **RD-F2056A**

- Heavy duty construction, compact and straight design to reach surfaces in confined spaces.
- Heat-treated piston and needles for longer life.
- Includes 19 needles for fast surface clean-up work.
- Great for rust removal on chassis, cleaning up steel wheel drums, and many more applications.
- Front exhaust.



Needle Qty	Blow Permin	Stroke Length	Air Inlet	Air Hose
pcs	rpm	mm	(PT)	(ID)
19	4,600	40	1/4"	3/8"

Measure: 38x27x34/10pcs 19/18kgs

## RUST REMOVAL

Model > **RD-2056C**

- Hardened steel barrel and piston for less wear and longer life.
- Light weight aluminum housing.
- Built-in power regulator and trigger control.
- A must for general cutting, chipping and scraping.
- 4 round chisels included.
- Front exhaust.



Needle Qty	Blow Permin	Stroke Length	Air Inlet	Air Hose
pcs	rpm	mm	(PT)	(ID)
19	4,500	24	1/4"	3/8"

Measure: 38x27x34/10pcs 19/18kgs

## 9PC 150MM AIR HAMMER KIT

Model > **RD-F2012BZ-150**

- 1pc-150mm air hammer RD-F2012B-150
- 4pc-125mm chisels
- 1pc-oil pot
- 1pc-spring retainer
- 1pc-nipple
- 1pc-blow mold case



Measure: 77.5x33.5x25/10pcs 19/17kgs

## 10PC AIR HAMMER KIT

Model > **RD-F2012AZ-190**

- 1pc-190mm air hammer RD-F2012A-190
- 5pc-175mm chisels(spot weld cutter, sheet metal trimmer, tape punch, flate, panel cutter)
- 1pc-spring retainer
- 1pc-oil pot
- 1pc-nipple
- 1pc-blow mold case



Measure: 77.5x33.5x25/10pcs 19/17kgs

# AIR CAULKING GUN

## AIR CAULKING GUN

Model > **RD-F2008A**

- A must for the builder or window installer and car repairman.
- Will take standard size silicone cartridges & makes applying large amounts of silicone a simple and easy job.
- Large amounts of silicone a simple and easy job.



Bore x Tube Length	Air Inlet	Air Hose	Avg. Air Consumption		Sug. Air Comp
inch	(PT)	(ID)	cfm	L/min	HP
2 x 8 - 1/2"	1/4"	3/8"	6	170	1.5

Measure: 35x36x33/10pcs 12/10kgs

## AIR PLASTIC CAULKING GUN

Model > **RD-F2008B**

- A must for the builder or window installer and car repairman.
- Will take standard size silicone cartridges & makes applying large amounts of silicone a simple and easy job.



Air Inlet	Pressure	Avg. Air Consumption	
(PT)	psi	cfm	L/min
1/4"	90	6	170

Measure: 34x35x33/10pcs 7/6kgs

## AIR CAULKING GUN

Model > **RD-F2008C**

- Special for car and bus



Air Inlet	Air Hose	Pressure	Avg. Air Consumption		Sug. Air Comp
(PT)	(ID)	psi	cfm	L/min	HP
1/4"	3/8"	90	6	170	1.5

Measure: 35x35x33/10pcs 10/9kgs

## AIR CAULKING GUN

Model > **RD-F2008D**



Air Inlet	Air Hose	Pressure	Avg. Air Consumption		Sug. Air Comp
(PT)	(ID)	psi	cfm	L/min	HP
1/4"	3/8"	90	6	170	1.5

Measure: 35x35x33/10pcs 10/9kgs

# AIR CAULKING GUN AIR GREASE GUN

## AIR CAULKING GUN

Model > **RD-F2008E**

- Special for car and bus



Air Inlet	Air Hose	Pressure	Avg. Air Consumption		Sug. Air Comp
(PT)	(ID)	psi	cfm	L/min	HP
1/4"	3/8"	90	6	170	1.5

Measure: 35x35x33/10pcs 10/9kgs

## AIR CAULKING GUN

Model > **RD-F2008F**



Air Inlet	Air Hose	Pressure	Avg. Air Consumption		Sug. Air Comp
(PT)	(ID)	psi	cfm	L/min	HP
1/4"	3/8"	90	6	170	1.5

Measure: 35x35x33/10pcs 10/9kgs

## AIR GREASE GUN

Model > **YQ53**

- Widely used in machinery and automobile industry.
- Designed to take your standard size grease cartridges up to 500 cc.
- Two hoses (one aluminum hose one rubber hose) included
- Pressure Tested: 1,200 to 6,000 psi at 30-120psi
- Loadingways:  
Stand 14-1/2" grease cartridge  
Loading with dispenser  
Loading with bulk grease



Air Inlet	Air Hose	Avg. Air Consumption		Sug. Air Comp
(PT)	(ID)	cfm	L/min	HP
1/4"	3/8"	6	170	1.5

Measure: 41x38x37.5/10pcs 16/15kgs

## AIR GREASE GUN

Model > **YQ53N**

- Widely used in machinery and automobile industry.
- Designed to take your standard size grease cartridges up to 500 cc.
- Working Pressure: 90psi/6.3kg(bar)
- Pressure Tested: 1,200 to 6,000 psi at 30-120psi
- Loadingways:  
Cartridge grease  
Suction filling  
Filler pump filling



Air Inlet	Air Hose	Avg. Air Consumption		Sug. Air Comp
(PT)	(ID)	cfm	L/min	HP
1/4"	3/8"	6	170	-

Measure: 41x38x37.5/10pcs 16/15kgs



# AIR GREASE GUN OTHER AIR TOOL

## AIR GREASE GUN W/6PC ACCESSORIES

Model > **YQ53S**

- Heavy duty construction.
- Delivers 1.7 oz. of grease per 100 strokes.
- Designed to take your standard size grease cartridges up to 500cc.
- Widely used in machinery and automobile industry.
- Pneumatic motor and hand-start body exchangeable.
- 1pc-air grease gun YQ53
- 1pc-handle
- 1pc-rubber tube
- 1pc-aluminum tube
- 1pc-quick coupler (usually attached on the gun body)
- 1pc-female coupler
- 1pc-nipple



Measure: 51.5x47.5x31.5/10pcs 22/21kgs

## STRAIGHT PUNCH FLANGE TOOL

Model > **RD-F2055**

- Punch designed for easy replacement.
- Features a rotating head for convenient available.
- Every pull of the lever delivers a single punch or a single flange crimp with precision control.
- Forms an offset crimped edge on sheet metals for no-bump lay welds.
- Reduces metal fabrication time in half.



Capacity Gauge	Punch Hole Dia.	Air Pressure	Air Inlet
mm	mm	PSI	NPT
14	5	90	1/4"

## AIR BODY SAW

Model > **RD-F2028**

- Lever throttle trigger and adjustable regulator.
- Adjustable blade guard to control depth of cut.
- Performs straight or scroll cuts on metal(1.6mm max.), aluminum(2.0mm), and plastics & fiberglass up to 2.5mm thick.
- Excellent for body shop repair, muffler and exhaust work, and sun roof installations 2 saw blade (32TPI & 24T) included.
- Front exhaust.



Strokes Per Minute	Cutting Capacity	Air Inlet	Air Hose	Avg. Air Consumption		Sug. Air Comp
rpm	mm	(PT)	(ID)	cfm	L/min	HP
10,000	1.6(steel) 2.0(aluminum)	1/4"	3/8"	6	170	1.5

Measure: 45x31.5x21/20pcs 21/20kgs

## AIR FILE W/4PCS FILES

Model > **RD-F2050**

- For surface preparation work involving the cleaning or removal of paint, rust, dirt, or weld slag
- Durable, dependable and economical solution



Chuck Size	Stroke per minute	Air Inlet	Air Hose	Air Consumption	Air Pressure	Stroke
mm	spm	(PT)	(ID)	cfm	psi	inch
6	3,700	1/4"	3/8"	3	85-100	23/64"

Weight: 2.2lbs

## AIR METAL SHEAR(trimming-outline type)

Model > **RD-F2019**

- Hardened steel blades allow you to make smooth and clean cuts through 18 gauge(1.2mm) sheet metal, aluminum and even plastic.
- Delivers 2,200 strokes per minute.
- Specially designed cutter head to make both straight and contour cuts with a minimum of edge distortion.
- All bearing motor gives you reliable service, high performance.
- Handle exhaust



Steel	Strokes Per Minute	Air Inlet	Air Hose	Avg. Air Consumption		Sug. Air Comp
GA/mm	rpm	(PT)	(ID)	cfm	L/min	HP
18GA/1.2mm	2,200	1/4"	3/8"	4	113	1.5

Measure: 28.5x27.5x33.5/10pcs 14/13kgs

## STRAIGHT AIR METAL SHEAR

Model > **RD-F2019B**

- Hardened steel blades allow you to make smooth and clean cuts through 18 gauge(1.2mm) sheet metal, aluminum and even plastic.
- Delivers 2,200 strokes per minute.
- Specially designed cutter head to make both straight and contour cuts with a minimum of edge distortion.
- All bearing motor gives you reliable service, high performance.
- Rear exhaust



Steel	Strokes Per Minute	Air Inlet	Air Hose	Avg. Air Consumption		Sug. Air Comp
GA/mm	rpm	(PT)	(ID)	cfm	L/min	HP
18GA/1.2mm	2,800	1/4"	3/8"	4	113	1.5

Measure: 44.5x26.5x25.5/20pcs 20/18kgs

## AIR FLARE TOOL

Model > **RD-F2038**



## AIR FLARE TOOL KIT

Model > **RD-F2038Z**



## 43PC AIR TOOL KIT

Model > **RD-F2616Z**

- 1pc-1/2" air impact wrench RD-F2006
- 1pc-6" D.A. Sander RD-F2020C
- 1pc-150mm air hammer RD-F2012B-150
- 1pc-6mm air die grinder RD-F2011
- 1pc-3/8" reversible air drill RD-F2002
- 1pc-4mm hex key wrench
- 1pc-oil pot
- 1pc-1/2"dr 5" extension bar
- 10pc-1/2" dr sockets: 9, 10, 11, 13, 14, 17, 19, 22, 24, 27mm
- 1pc-6" pad
- 2pc-hand wrenches
- 5pc-6mm mounted grinding stones
- 5pc-3mm mounted grinding stoned
- 1pc-collet chuck
- 1pc-spring retainer
- 4pc-125mm round shank chisels
- 1pc-chuck key
- 2pc-50mm bits -no.4, 6
- 2pc-50mm bits +no.2, 3
- 1pc-blow mold case



## 35PC AIR TOOL KIT

Model > **RD-F2613Z**

- 1pc-1/2" air impact wrench RD-F2006
- 1pc-3/8" air ratchet wrench RD-F2026A
- 1pc-150mm air hammer RD-F2012B-150
- 1pc-1/4"mm air die grinder RD-F2011
- 1pc-spring retainer
- 1pc-oil pot
- 10pc-1/2" dr sockets: 9, 10, 11, 13, 14, 17, 19, 22, 24, 27mm
- 1pc-3" extension bar
- 6pc-nipples
- 3pc-1/4" mounted grinding stones
- 3pc-125mm chisels(round)
- 1pc-3/8" to 1/2" adaptor
- 1pc-1/4" (F) quick coupler
- 2pc-hand wrenches
- 1pc-4mm hex key wrench
- 1pc-blow mold case



## 41PC AIR TOOL KIT

Model > **RD-F2615Z**

- 1pc-1/2" air impact wrench RD-F2006
- 1pc-3/8" air ratchet wrench RD-F2026A
- 1pc-150mm air hammer RD-F2012B-150
- 1pc-1/4"mm air die grinder RD-F2005
- 1pc-spring retainer
- 1pc-oil pot
- 10pc-1/2"dr sockets: 9, 10, 11, 13, 14, 17, 19, 22, 24, 27mm
- 1pc-3" extension bar
- 5pc-1/4" mounted grinding stones
- 5pc-nipples
- 5pc-125mm chisels (round)
- 1pc-3/8" to 1/2" adaptor
- 1pc-1/4"(F) quick coupler
- 2pc-hand wrenches
- 1pc-4mm hex key wrench
- 1pc-air blow gun
- 1pc-tape
- 1pc-blow mold case



## 50PC AIR TOOL KIT

Model > **RD-F2617Z**

- 1pc-1/2" air impact wrench RD-F2031
- 1pc-1/2" air ratchet wrench
- 1pc-150mm air hammer RD-F2012B-150
- 1pc-oil pot
- 10pc-1/2"dr sockets: 9, 10, 11, 13, 14, 17, 19, 22, 24, 27mm
- 1pc-1/2"dr. 5"extension bar
- 1pc 6" pad
- 2pc-hand wrenches
- 5pc-6mm mounted grinding stones
- 5pc-3mm mounted grinding stones
- 1pc-collet chuck
- 1pc-3/8" to 1/2" adaptor
- 1pc-spring retainer
- 4pc-125mm round shank chisels
- 1pc-chuck key
- 4pc-50 mm bits
- 1pc-wrench
- 5pc-nipple
- 1pc-blow mold case



# AIR TOOLS KIT SPRAY GUN

## 50PC AIR TOOL KIT

### Model > RD-F2618Z

- 1pc-1/2" air impact wrench RD-F2006
  - 1pc-3/8" air ratchet wrench RD-F2026A
  - 1pc-150mm air hammer RD-F2012B-150
  - 3pc-125mm round chisels
  - 10pc-1/2"dr impact sockets: 9, 10, 11, 13, 14, 17, 19, 22, 24, 27mm
  - 1pc-3/8" to 1/2" adaptor
  - 1pc-3/8" (or 1/2") dr.3" ext.bar
  - 1pc-spring retainer
  - 5pc-male coupler
  - 1-teflon tape
  - 1pc-female coupler
  - 1pc-air gun
  - 1pc-safety nozzle
  - 1pc-rubber nozzle
  - 2pc-sport needle & adaptor
  - 1pc-5/32" allen wrench
  - 1pc-ball foot air chuck
  - 1pc-high pressure nozzle
  - 1pc-tapered nozzle
  - 2pc-1/4" to 1/4" F & M hose connector
  - 1pc-1/4" male-female nipple
  - 1pc-oil pot
  - 1pc-swivel hose connector
  - 1pc-dual foot tire gauge
  - 1pc-dr screwdriver bit holder
  - 6pc-1/4" hex.drive bits
  - 1pc-mini oiler
  - 1pc-blow mold case
- A good helper for different jobs with different tools and accessories. Foldable blow mold case for easy and convenient carrying



## 71PC AIR TOOL KIT

### Model > RD-F2621Z

- 1pc-1/2" air impact wrench RD-F2006
- 1pc-3/8" air ratchet wrench RD-F2026A
- 1pc-150mm air hammer RD-F2012B-150
- 1pc-1/4" air die grinder RD-F2011
- 1pc-air blow gun
- 8pc-impact sockets(9, 10, 11, 13, 14, 17, 19mm)
- 1pc-3/8" to 1/2" adaptor
- 1pc-screw bit holder
- 1pc-air quick coupler female
- 5pc-male nipple
- 1pc-female nipple
- 3pc-chisels
- 1pc-spring retainer
- 1pc-ball foot air chuck
- 1pc-rubber nozzle
- 1pc-safety nozzle
- 1pc-high speed nozzle
- 1pc-tapered nozzle
- 2pc-sport needle
- 1pc-1/4" male-female nipple
- 1pc-1/8"collet
- 10pc-grinding mounted stones
- 1pc-sanding drum
- 10pc-sanding sleeve
- 9pc-screw bits
- 2pc-hand wrenches
- 1pc-4mm hex wrench
- 1pc-teflon tape
- 1pc-oil pot
- 1pc-blow mold case



## SPRAY GUNS SERIES

### Model > RD-821

### Model > RD-822

### Model > RD-822

### Model > H827

- High volume low pressure design in high transfer efficiency to save time and paint up to 25%, reducing overshot and spray mist to protect environment. Precise air cap set.
- Stainless nozzle and needle to allow use aqueous based paint.
- Good application for spray painting of middle or high adhesive for surface finishing and middle coating.
- Color available: chrome color, satin color, any anodized paint color.



Standard Nozzle: 1.4mm  
Optional Nozzle: 1.2-2.5mm  
Operating Pressure: 20-50psi  
Pattern Width: 190mm  
Air Consumption: 7.5cfm  
Cup Capacity: 1000ml  
Measure: 63x48x24.5cm/10pcs  
Weight: 13/12kg

Standard Nozzle: 1.4mm  
Optional Nozzle: 0.5-1.5mm  
Operating Pressure: 20-50psi  
Pattern Width: 190mm  
Air Consumption: 8.8cfm  
Cup Capacity: 200ml  
Measure: 51x37.5x21.5cm/20pcs  
Weight: 12/11kg

Standard Nozzle: 1.4mm  
Optional Nozzle: 0.5-1.5mm  
Operating Pressure: 20-50psi  
Pattern Width: 190mm  
Air Consumption: 8.8cfm  
Cup Capacity: 200ml  
Measure: 51x37.5x21.5cm/20pcs  
Weight: 12/11kg

Standard Nozzle: 1.4mm  
Optional Nozzle: 1.2-2.5mm  
Operating Pressure: 20-50psi  
Pattern Width: 190mm  
Air Consumption: 8.8cfm  
Cup Capacity: 600ml  
Measure: 66.5x24.5x26.5cm/10pcs  
Weight: 13/12kg



## SPRAY GUNS SERIES

### Model > S980

- High volume low pressure design in high transfer efficiency to save time and paint up to 25%, reducing overshot and spray mist to protect environment. Precise air cap set.
- Stainless nozzle and needle to allow use aqueous based paint.
- Good application for spray painting of middle or high adhesive for surface finishing and middle coating.
- Color available: chrome color, satin color, any anodized paint color.



Standard Nozzle: 1.3mm  
Optional Nozzle: 1.0-2.2mm  
Operating Pressure: 19psi  
Air Consumption: 15cfm  
Cup Capacity: 600ml  
Measure: 72x25.5x34.5cm/10pcs  
Weight: 13/12kg

### Model > H827B



Standard Nozzle: 1.4mm  
Optional Nozzle: 1.3-2.5mm  
Operating Pressure: 20-50psi  
Air Consumption: 8.8cfm  
Cup Capacity: 600ml  
Measure: 72x25.5x34.5cm/10pcs  
Weight: 13/12kg

### Model > G970



Standard Nozzle: 1.4mm  
Optional Nozzle: 1.2-2.5mm  
Operating Pressure: 50-70psi  
Pattern Width: 180-240mm  
Air Consumption: 8.8cfm  
Cup Capacity: 600ml  
Measure: 66.5x24.5x26.5cm/10pcs  
Weight: 13/12kg

### Model > S970S



Standard Nozzle: 1.5mm  
Optional Nozzle: 1.0-2.0mm  
Operating Pressure: 50-70psi  
Pattern Width: 110-250mm  
Air Consumption: 11.2cfm  
Cup Capacity: 1000ml  
Measure: 52.5x26x30.5cm/6pcs  
Weight: 9/7kg

## SPRAY GUNS SERIES

### Model > H811

- High volume low pressure design in high transfer efficiency to save time and paint up to 25%, reducing overshot and spray mist to protect environment. Precise air cap set.
- Stainless nozzle and needle to allow use aqueous based paint.
- Good application for spray painting of middle or high adhesive for surface finishing and middle coating.
- Color available: chrome color, satin color, any anodized paint color.



Standard Nozzle: 1.4mm  
Optional Nozzle: 1.2-2.5mm  
Operating Pressure: 20-50psi  
Pattern Width: 190mm  
Air Consumption: 8.8cfm  
Cup Capacity: 600ml  
Measure: 66.5x24.5x26.5cm/10pcs  
Weight: 13/12kg

### Model > SP80



Standard Nozzle: 1.5mm  
Optional Nozzle: 1.0-2.2mm  
Operating Pressure: 50-70psi  
Pattern Width: 110-280mm  
Air Consumption: 7.5cfm  
Cup Capacity: 600ml

### Model > R-21XG



Standard Nozzle: 1.5mm  
Optional Nozzle: 1.0-2.0mm  
Operating Pressure: 50-70psi  
Pattern Width: 150-250mm  
Air Consumption: 11.5cfm  
Cup Capacity: 400ml

### Model > R-21XS



Standard Nozzle: 1.5mm  
Operating Pressure: 50psi  
Pattern Width: 170mm  
Air Consumption: 4cfm  
Cup Capacity: 600ml



## SPRAY GUNS SERIES

### Model > RD-4001G

- High volume low pressure design in high transfer efficiency to save time and paint up to 25%, reducing overshot and spray mist to protect environment. Precise air cap set.
- Stainless nozzle and needle to allow use aqueous based paint.
- Good application for spray painting of middle or high adhesive for surface finishing and middle coating.
- Color available: chrome color, satin color, any anodized paint color.



Standard Nozzle: 1.8mm  
Optional Nozzle: 1.4-2.5mm  
Operating Pressure: 65-90psi  
Pattern Width: 280mm  
Air Consumption: 14cfm  
Cup Capacity: 600ml  
Measure: 54x38x32cm/10pcs  
Weight: 14/12kg

### Model > RD-4001S



Standard Nozzle: 1.8mm  
Optional Nozzle: 1.4-2.5mm  
Operating Pressure: 65-90psi  
Pattern Width: 280mm  
Air Consumption: 14cfm  
Cup Capacity: 1000ml  
Measure: 54x38x32cm/10pcs  
Weight: 14/12kg

### Model > S770G



Standard Nozzle: 1.5mm  
Optional Nozzle: 1.3-2.5mm  
Operating Pressure: 50-70psi  
Pattern Width: 200-240mm  
Air Consumption: 7.2cfm  
Cup Capacity: 400ml  
Measure: 61.5x37.5x25.5cm/10pcs  
Weight: 10/9kg

### Model > S770S



Standard Nozzle: 1.5mm  
Optional Nozzle: 1.3-2.5mm  
Operating Pressure: 50-70psi  
Pattern Width: 200-240mm  
Air Consumption: 7.2cfm  
Cup Capacity: 1000ml  
Measure: 61.5x37.5x25.5cm/10pcs  
Weight: 13/12kg

## SPRAY GUNS SERIES

### Model > PQ-2

- High volume low pressure design in high transfer efficiency to save time and paint up to 25%, reducing overshot and spray mist to protect environment. Precise air cap set.
- Stainless nozzle and needle to allow use aqueous based paint.
- Good application for spray painting of middle or high adhesive for surface finishing and middle coating.
- Color available: chrome color, satin color, any anodized paint color.



Standard Nozzle: 1.0mm  
Optional Nozzle: 1.0-2.0mm  
Operating Pressure: 50-70psi  
Pattern Width: 150mm  
Air Consumption: 14.5cfm  
Cup Capacity: 1000ml  
Measure: 69.5x32.5x26cm/10pcs  
Weight: 11/10kg

### Model > PU-2UC



Standard Nozzle: 2.0mm  
Optional Nozzle: 1.5-2.5mm  
Operating Pressure: 50-70psi  
Pattern Width: 250mm  
Air Consumption: 14.5cfm  
Cup Capacity: 1000ml  
Measure: 57x37x32cm/10pcs  
Weight: 15/13kg

### Model > AS-78



Standard Nozzle: 2.0mm  
Optional Nozzle: 1.0-3.0mm  
Operating Pressure: 50-70psi  
Pattern Width: 200-240mm  
Air Consumption: 14.5cfm  
Cup Capacity: 1000ml  
Measure: 58x38x28.8cm/10pcs  
Weight: 14/13kg

### Model > NS990G



Standard Nozzle: 1.5mm  
Optional Nozzle: 1.2-2.0mm  
Operating Pressure: 50-70psi  
Pattern Width: 120-250mm  
Air Consumption: 11.5cfm  
Cup Capacity: 600ml  
Measure: 68x46x25.5cm/20pcs  
Weight: 18/16kg

## SPRAY GUNS SERIES

### Model > S990G

- High volume low pressure design in high transfer efficiency to save time and paint up to 25%, reducing overshot and spray mist to protect environment. Precise air cap set.
- Stainless nozzle and needle to allow use aqueous based paint.
- Good application for spray painting of middle or high adhesive for surface finishing and middle coating.
- Color available: chrome color, satin color, any anodized paint color.



Standard Nozzle: 1.5mm  
Optional Nozzle: 1.2-2.0mm  
Operating Pressure: 50-70psi  
Pattern Width: 110-250mm  
Air Consumption: 11.5cfm  
Cup Capacity: 600ml  
Measure: 67.5x47x26.5cm/20pcs  
Weight: 18/16kg

### Model > S990S



Standard Nozzle: 1.5mm  
Optional Nozzle: 1.2-2.0mm  
Operating Pressure: 50-70psi  
Pattern Width: 110-250mm  
Air Consumption: 11.5cfm  
Cup Capacity: 1000ml  
Measure: 57x37x28.5cm/10pcs  
Weight: 9/8kg

### Model > W-71G



Standard Nozzle: 1.5mm  
Optional Nozzle: 1.0-2.0mm  
Operating Pressure: 50-70psi  
Pattern Width: 150-250mm  
Air Consumption: 11.5cfm  
Cup Capacity: 400ml  
Measure: 54.5x40.5x25cm/20pcs  
Weight: 18/16kg

### Model > W-71S



Standard Nozzle: 1.5mm  
Optional Nozzle: 1.0-2.0mm  
Operating Pressure: 50-70psi  
Pattern Width: 150-250mm  
Air Consumption: 11.5cfm  
Cup Capacity: 600ml  
Measure: 66.5x40x25cm/20pcs  
Weight: 19/17kg

## SPRAY GUNS SERIES

### Model > W-77G

- High volume low pressure design in high transfer efficiency to save time and paint up to 25%, reducing overshot and spray mist to protect environment. Precise air cap set.
- Stainless nozzle and needle to allow use aqueous based paint.
- Good application for spray painting of middle or high adhesive for surface finishing and middle coating.
- Color available: chrome color, satin color, any anodized paint color.



Standard Nozzle: 2.0mm  
Optional Nozzle: 1.5-3.0mm  
Operating Pressure: 50-70psi  
Pattern Width: 120-250mm  
Air Consumption: 10.5cfm  
Cup Capacity: 400ml  
Measure: 44.5x35x23cm/10pcs  
Weight: 10/9kg

### Model > W-77S



Standard Nozzle: 2.0mm  
Optional Nozzle: 1.5-3.0mm  
Operating Pressure: 50-70psi  
Pattern Width: 120-250mm  
Air Consumption: 10.5cfm  
Cup Capacity: 1000ml  
Measure: 61.5x37.5x25.5cm/10pcs  
Weight: 14/13kg

### Model > F-75G



Standard Nozzle: 2.0mm  
Optional Nozzle: 1.5-3.0mm  
Operating Pressure: 50-70psi  
Pattern Width: 120-250mm  
Air Consumption: 10.5cfm  
Cup Capacity: 400ml  
Measure: 44.5x35x23cm/10pcs  
Weight: 10/9kg

### Model > F-75S



Standard Nozzle: 1.5mm  
Optional Nozzle: 1.3-2.5mm  
Operating Pressure: 50-70psi  
Pattern Width: 180-240mm  
Air Consumption: 11.2cfm  
Cup Capacity: 750ml  
Measure: 67x43x26.5cm/10pcs  
Weight: 19/17kg

## SPRAY GUNS SERIES

### Model > ST-112

- High volume low pressure design in high transfer efficiency to save time and paint up to 25%, reducing overshot and spray mist to protect environment. Precise air cap set.
- Stainless nozzle and needle to allow use aqueous based paint.
- Good application for spray painting of middle or high adhesive for surface finishing and middle coating.
- Color available: chrome color, satin color, any anodized paint color.



Standard Nozzle: 1.3mm  
Optional Nozzle: 1.5-2.5mm  
Operating Pressure: 50psi  
Pattern Width: 170mm  
Air Consumption: 4cfm  
Cup Capacity: 1000ml  
Measure: 57.5x38.5x31cm/10pcs  
Weight: 11/10kg

### Model > SG-112



Standard Nozzle: 1.3mm  
Optional Nozzle: 1.5-2.5mm  
Operating Pressure: 50psi  
Pattern Width: 150mm  
Air Consumption: 4cfm  
Cup Capacity: 1000ml  
Measure: 57.5x38.5x31cm/10pcs  
Weight: 11/10kg

### Model > RD-112



Standard Nozzle: 1.3mm  
Optional Nozzle: 1.5-2.5mm  
Operating Pressure: 50psi  
Pattern Width: 170mm  
Air Consumption: 4cfm  
Cup Capacity: 1000ml  
Measure: 57.5x38.5x31cm/10pcs  
Weight: 13/12kg

### Model > RD-527



Standard Nozzle: 1.3mm  
Operating Pressure: 50psi  
Pattern Width: 170mm  
Air Consumption: 4cfm  
Cup Capacity: 1000ml  
Measure: 57.5x34x38.5cm/10pcs  
Weight: 10/9kg

## SPRAY GUNS SERIES

### Model > MD-472

- High volume low pressure design in high transfer efficiency to save time and paint up to 25%, reducing overshot and spray mist to protect environment. Precise air cap set.
- Stainless nozzle and needle to allow use aqueous based paint.
- Good application for spray painting of middle or high adhesive for surface finishing and middle coating.
- Color available: chrome color, satin color, any anodized paint color.



Standard Nozzle: 1.3mm  
Operating Pressure: 50psi  
Pattern Width: 170mm  
Air Consumption: 4cfm  
Cup Capacity: 750ml  
Measure: 56.5x35x28.5cm/10pcs  
Weight: 10/9kg

### Model > MD-472P



- A22 Plastic Body  
1 Jet Nozzle & 1 Fog Nozzle

Standard Nozzle: 1.3mm  
Operating Pressure: 50psi  
Pattern Width: 170mm  
Air Consumption: 4cfm  
Cup Capacity: 750ml  
Measure: 64x34x27cm/10pcs  
Weight: 7/6kg

### Model > F-100G



Standard Nozzle: 1.5mm  
Optional Nozzle: 1.5-2.0mm  
Operating Pressure: 50-70psi  
Pattern Width: 180-250mm  
Air Consumption: 8.3cfm  
Cup Capacity: 400ml  
Measure: 51.5x41.5x28.5cm/10pcs  
Weight: 18/16kg

### Model > F100S



Standard Nozzle: 1.5mm  
Optional Nozzle: 1.5-2.0mm  
Operating Pressure: 50-70psi  
Pattern Width: 180-250mm  
Air Consumption: 8.3cfm  
Cup Capacity: 750ml  
Measure: 57.5x35x28.5cm/10pcs  
Weight: 19/17kg

## SPRAY GUNS SERIES

### Model> E70

- High volume low pressure design in high transfer efficiency to save time and paint up to 25%, reducing overshot and spray mist to protect environment. Precise air cap set.
- Stainless nozzle and needle to allow use aqueous based paint.
- Good application for spray painting of middle or high adhesive for surface finishing and middle coating.
- Color available: chrome color, satin color, any anodized paint color.



Standard Nozzle: 1.5mm  
Optional Nozzle: 1.5-2.0mm  
Operating Pressure: 50-70psi  
Pattern Width: 110-280mm  
Air Consumption: 7.5cfm  
Cup Capacity: 600ml  
Measure: 66x32x41.5cm/10pcs  
Weight: 22/20kg

### Model> G70



Standard Nozzle: 1.5mm  
Optional Nozzle: 1.5-2.0mm  
Operating Pressure: 50-70psi  
Pattern Width: 110-280mm  
Air Consumption: 7.5cfm  
Cup Capacity: 1000ml  
Measure: 57.5x38x28.5cm/10pcs  
Weight: 10/9kg

### Model> F-2



Standard Nozzle: 0.5mm  
Operating Pressure: 70psi  
Pattern Width: 50mm  
Air Consumption: 4cfm  
Cup Capacity: 200ml  
Measure: 57.5x34x38.5cm/10pcs  
Weight: 10/9kg

### Model> LASER K-3



Standard Nozzle: 0.5mm  
Operating Pressure: 50-70psi  
Pattern Width: 50mm  
Air Consumption: 7.5cfm  
Cup Capacity: 200ml  
Measure: 46.5x41.5x35.5cm/30pcs  
Weight: 16/14kg

## SPRAY GUNS SERIES

### Model> OSAKA K3

- High volume low pressure design in high transfer efficiency to save time and paint up to 25%, reducing overshot and spray mist to protect environment. Precise air cap set.
- Stainless nozzle and needle to allow use aqueous based paint.
- Good application for spray painting of middle or high adhesive for surface finishing and middle coating.
- Color available: chrome color, satin color, any anodized paint color.



Standard Nozzle: 0.5mm  
Operating Pressure: 50-70psi  
Pattern Width: 50mm  
Air Consumption: 7.5cfm  
Cup Capacity: 200ml  
Measure: 46.5x28.5x35.5cm/20pcs  
Weight: 11/10kg

### Model> R-2



Standard Nozzle: 0.5mm  
Operating Pressure: 50-70psi  
Pattern Width: 50mm  
Air Consumption: 7.5cfm  
Cup Capacity: 200ml  
Measure: 46.5x41.5x35.5cm/30pcs  
Weight: 16/14kg

### Model> W50



Standard Nozzle: 0.5mm  
Operating Pressure: 50-70psi  
Pattern Width: 50mm  
Air Consumption: 7.5cfm  
Cup Capacity: 200ml  
Measure: 57.5x34x38.5cm/10pcs  
Weight: 10/9kg

### Model> RD-128



Standard Nozzle: 1.0mm  
Optional Nozzle: 1.3-1.5mm  
Operating Pressure: 50-70psi  
Pattern Width: 180mm  
Air Consumption: 2.5cfm  
Cup Capacity: 200ml  
Measure: 36x41.5x38.5cm/20pcs  
Weight: 14/12kg



## SPRAY GUN

### Model> X101

### Model> X101A

### Model> X101B

### Model> W-201

- High volume low pressure design in high transfer efficiency to save time and paint up to 25%, reducing overshot and spray mist to protect environment. Precise air cap set.
- Stainless nozzle and needle to allow use aqueous based paint.
- Good application for spray painting of middle or high adhesive for surface finishing and middle coating.
- Color available: chrome color, satin color, any anodized paint color.



Standard Nozzle: 1.5mm  
Optional Nozzle: 1.5-2.0mm  
Operating Pressure: 50-70psi  
Pattern Width: 180-250mm  
Air Consumption: 8.3cfm  
Cup Capacity: 250ml

Standard Nozzle: 1.5mm  
Optional Nozzle: 1.5-2.0mm  
Operating Pressure: 50-70psi  
Pattern Width: 110-280mm  
Air Consumption: 7.5cfm  
Cup Capacity: 250ml

Standard Nozzle: 1.8mm  
Optional Nozzle: 1.5-2.0mm  
Operating Pressure: 50-70psi  
Pattern Width: 110-280mm  
Air Consumption: 7.5cfm  
Cup Capacity: 1000ml

Standard Nozzle: 1.5mm  
Operating Pressure: 50psi  
Pattern Width: 150mm  
Air Consumption: 4cfm  
Cup Capacity: 600ml

## SPRAY GUN

### Model> H827S

### Model> H827A

- High volume low pressure design in high transfer efficiency to save time and paint up to 25%, reducing overshot and spray mist to protect environment. Precise air cap set.
- Stainless nozzle and needle to allow use aqueous based paint.
- Good application for spray painting of middle or high adhesive for surface finishing and middle coating.
- Color available: chrome color, satin color, any anodized paint color.





# SPRAY GUN AIR HOPPER GUN

## SPRAY GUN

### Model> F-100A

Standard Nozzle: 1.5mm  
Optional Nozzle: 1.5/1.8mm  
Operating Pressure: 70psi  
Pattern Width: 180-250mm

Air Consumption: 8.3cfm  
Measure: 70.5x48x19.5cm/10pcs  
Weight: 9/8kg



### Model> F-100B

Standard Nozzle: 1.5mm  
Optional Nozzle: 1.5/1.8mm  
Operating Pressure: 70psi  
Pattern Width: 180-250mm

Air Consumption: 8.3cfm  
Measure: 70.5x48x19.5cm/10pcs  
Weight: 9/8kg



### Model> F-W101A

Standard Nozzle: 1.5mm  
Optional Nozzle: 1.5/1.8mm  
Operating Pressure: 70psi  
Pattern Width: 180-250mm

Air Consumption: 8.3cfm  
Measure: 70.5x48x19.5cm/10pcs  
Weight: 9/8kg



### Model> F-W101B

Standard Nozzle: 1.5mm  
Optional Nozzle: 1.5/1.8mm  
Operating Pressure: 70psi  
Pattern Width: 180-250mm

Air Consumption: 8.3cfm  
Measure: 70.5x48x19.5cm/10pcs  
Weight: 9/8kg



### Model> RV-2

- Density Gauge  
- Applies for measuring or comparing the density of liquid, such as paint



### Model> OZ-A100

- Mainly apply for dust-erasing, temperature-controlling or decreasing by means of water-spraying fog in such sites as textile plants, places full of dust, places in high temperature but in less humidity, without leading to any water dripping in these sites.



### Model> RA-C2B

- Mainly apply for dust-erasing, temperature-controlling or decreasing by means of water-spraying fog in such sites as textile plants, places full of dust, places in high temperature but in less humidity, without leading to any water dripping in these sites.



## MULTI-PURPOSE SPRAY GUN



### Model> 9511A

- Nickel Planted  
- Material: Brass H62  
Measure: 82x34x29cm/10pcs  
Weight: 17/15kg



### Model> 9513A

- Material: Brass H62  
Measure: 82x34x29cm/10pcs  
Weight: 17/15kg



### Model> OK-99

- All plastic cup for less working fatigue and easy cleaning  
- Nickel planted with adjust button  
- Material: Brass H62  
- One plastic hose  
Measure: 82x34x29cm/10pcs  
Weight: 17/15kg

## AIR HOPPER GUN

- Aluminum gun body with comfortable handle and extra long trigger for greater control and less fatigue.  
- Large capacity aluminum / plastic hopper with built-in angle allow spraying of ceiling and walls.  
- Adjustable trigger slope for consistency of pattern.  
- Three air nozzle (4,6,8mm) and air shut-off valve included.



9514A



9514B

Model	Max dia.	Max height	Cup capacity	Nozzle dia.
	mm	mm	L	mm
9511A	134	270	2.5	1.7, 2.1
9513A	134	270	2.5	1.7, 2.1
OK-99	134	270	2.5	1.7, 2.1

Standard Nozzle	Optional Nozzle	Operating Pressure	Air consumption	Cup capacity
mm	mm	bar	cfm	litres
4.0	4.0-8.0	4.5-6	12-15	5

Measure: 81.5x55x28.5/6pcs 7/6kgs

# GREASE PUMP OIL PUMP

## 2 Litre Paint Tank

Model > **RD-F2025C-2litre**

- Good application for painting walls, benches, vehicles, etc. The best results are obtained by spraying thin, even coats of paint. Let the layers dry in between coats.
- Content: Air Paint Assembly 1  
Cover Assembly 1  
Cup 1  
Repair Kit 1  
Hose 2



Working Air Pressure	Cup Paint Volume	Hose Size	Material Output	Air Inlet
psi	quart	inch	CFM	HP
35-50	2	3/8"	11	1/4" NPT or BSP

## Hand Grease Pump

Model > **HG01**



Work pressure	Tank Capacity
bar	L
13-14	20

Measure: 37x36.5x72/1pc

## Hand Oil Pump

Model > **HE01**



Work Pressure	Tank Capacity
bar	L
13-14	20

Measure: 37x36.5x72/1pc

## PAINT TANK

Model > **PT-08**

- Painting Tank is mainly used for spray painting, highly adhesive and highly solid content coating in big working surface products, such as interior or exterior wall painting, floor, furniture, vessel machinery and electrical box. With 8L volume working, easy to move, highly efficient, easy to use, very safe character, and so on.



Maximun Pressure	Inlet Thread	Fluid Nozzle Size
Mpa	mm	mm
0.55	8	10

Measure: 31x31x45.5cm/1pc

## PAINT TANK 10L

Model > **RD-2025C**

- Measure: 37x36.5x46/1pc
- 16/14kgs
- Tank Capacity: 10L



## PAINT TANK 10L

Model > **RD-F2025D 10Litre**

- Pressure Regulator: 1
- Fluid Outlet: 2
- Inner Tank Included
- Tank Capacity: 10L



## PAINT TANK 10L

Model > **RD-F2025A 10Litre**

- Actuated by air motor
- Pressure Regulator: 1
- Fluid Outlet: 2
- Inner Tank Included
- Measure: 35.3x35x68.5/1pc
- 18/16kgs
- Tank Capacity: 10L



## PAINT TANK 20L

Model > **RD-F2025D 20Litre**

- Pressure Regulator: 1
- Fluid Outlet: 2
- Inner Tank Included
- Tank Capacity: 20L



## PAINT TANK 20L

Model > **RD-F2025A 20Litre**

- Actuated by air motor
- Pressure Regulator: 1
- Fluid Outlet: 2
- Inner Tank Included
- Measure: 35.3x35x73.5/1pc
- 21/19kgs
- Tank Capacity: 20L



- Complete with paint tank, pneumatic motor, air regulator, safety valve, outlet valve, paint exit hole.
- Seamless steel body construction of pressure tank for long durability.
- Teflon finish inside the inner tank for different viscosities. Air-actuated paint-stirring keeps paint from depositing at the tank bottom.
- Air inlet: 1/4"

## PAINT TANK 40L

Model > **RD-F2025D 40Litre**

- Pressure Regulator: 1
- Fluid Outlet: 2
- Inner Tank Included
- Tank Capacity: 40L



## PAINT TANK 40L

Model > **RD-F2025A 40Litre**

- Actuated by air motor
- Pressure Regulator: 1
- Fluid Outlet: 2
- Inner Tank Included
- Measure: 45x45x82/1pc
- 27/25.5kgs
- Tank Capacity: 40L



## PAINT TANK 60L

Model > **RD-F2025D 60Litre**

- Actuated by air motor
- Pressure Regulator: 1
- Fluid Outlet: 2
- Inner Tank Included
- Tank Capacity: 60L



## PAINT TANK 60L

Model > **RD-F2025A 60Litre**

- Fluid Outlet: 2
- Inner Tank Included
- Measure: 46.5x46.5x106.5/1pc
- 29/27kgs
- Tank Capacity: 60L



# WASHING GUN

## WASHING GUN

### Model > DO-10

- Aluminum body gun with power red iron cup.



Measure: 58.5x44.5x44.5 /2pcs colour box 15/13kgs

## WASHING GUN

### Model > DO-10A

- Aluminum body gun with polished aluminum cup.



Measure: 58.5x44.5x44.5 /2pcs colour box 15/13kgs

## WASHING GUN

### Model > DO-10D

- Aluminum body gun(nickel plated) with power red iron cup.



## WASHING GUN

### Model > DO-10E

- Aluminum body gun(nickel plated) with polished aluminum.



## WASHING GUN

### Model > DO-10J



## SQUIRT GUN

### Model > QH

- Nice nickel-coating body ensure a good operation and long life.
- Suitable for watering flower, grass, trees and some likely plants in the garden.

- Inlet Pipe Size: 13.6mm
- Spray Shape: column shape or fog shape
- Water Source: Top water

Measure: 45x28.5x19.5/20pcs 10/9kgs



## WASHING GUN WITH PVC HOSE

### Model > DO-10H

- DG-10-H with hose, 1/4" inlet thread size.

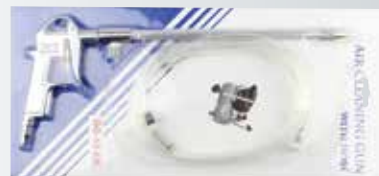


Measure: 56.5x55x43.5cm/40pcs 18/16kgs

## CLEANING GUN WITH PVC HOSE

### Model > DG-10EK

- Air cleaning gun with PVC hose.



Measure: 56.5x44.5x43cm/2pcs



# SAND BLASTING GUN

## SAND BLASTING GUN

### Model > PS-1

- Aluminum body gun with power red iron cup.



- Standard Tip of Nozzle: 2.0mm
- Air Inlet: 1/4" NPT or 1/4" BSP
- Siphon Hose Length: 1.3m

### Model > PS-2



- Standard Tip of Nozzle: 2.0mm
- Air Inlet: 1/4" NPT or 1/4" BSP
- Siphon Hose Length: 1.5m

### Model > PS-4



- 3pc-1/4" extra nozzle
- 1pc-13/64" air jet
- 1pc-key wrench
- 1pc-sand pick up twle
- 10ft-hose

## UNDER COATING GUN

### Model > BS-2A



### Model > A206



### Model > BC-2B



## 8pcs SAND BLASTING GUN KIT

### Model > PS-5



## SAND BLASTING GUN

### Model > PS-3



Standard Tip of Nozzle	Operating Pressure	Air consumption	Cup capacity	Air Inlet
mm	psi	-	ml	-
2.0	30-50	350L/min@70PSI	1000	1/4"NPT or 1/4"BSP

Measure: 58.5x42.5x29.5cm

## 6pcs SAND BLASTING GUN KIT

### Model > PS-6



# TIRE INFLATOR

## 5PC AIR TOOL KIT

Model > **RD-Air Tool Kit-2**

Contents:

- 1pc-Spray Gun S990S
- 1pc-Tire Inflating Gun TG-1
- 1pc-Washing Gun DO-10
- 1pc-Air Duster DG-10-1
- 1pc-5cm Recoil Hose w / universal fast coupler (Double Blister Packing)

Measure: 58.5x40.5x38.5/6pcs 14/12kgs



## TIRE INFLATOR

Model > **TG-1**



Measure: 48.5x35.5x27.5/25pcs 13/11kgs

## TIRE INFLATOR

Model > **TG-3**

Model > **TG-4**

Model > **TG-5**

Model > **TG-6**



Measure: 54x39x33.5/30pcs



Measure: 47.5x46.5x40/20pcs



Measure: 61.5x35x25/25pcs



Measure: 46.5x39x35cm/30pcs

## TIRE INFLATOR

Model > **TG-7**

Model > **TG-8**

Model > **TG-11**

Model > **TG-12**



Measure: 50x36x26.5cm/30pcs



Measure: 52.5x28.5x32/25pcs

- (Special for Big Truck)



- (Special for Bus)



## AIR BLOW GUN

Model > **DG-10**

- Inlet Thread Size: 1/4" NPT or 1/4" BSP
- Material: Aluminum



Measure: 62x45.5x28.5/100pcs

## AIR DUSTER GUN

- Inlet Thread Size: 1/4" NPT or 1/4" BSP
- Material: Aluminum



Measure: 45.5x25x26/50pcs

## AIR BLOW GUN KIT

Model > **DG-10C**

- Inlet Thread Size: 1/4" BSP or 1/4" NPT



Measure: 40x39x42/20pcs

## AIR BLOW GUN

Model > **AD-3**

- Inlet Thread Size: 1/4"
- Material: Aluminum



Model > **ABG-10**

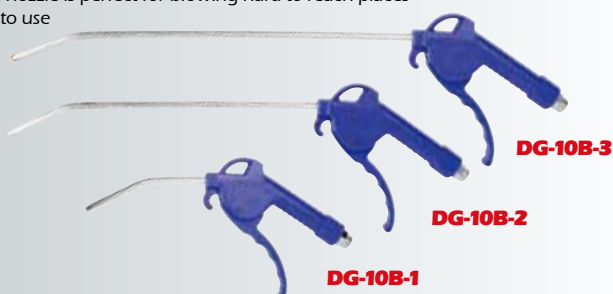
- Inlet Thread Size: 1/4"
- Air Hose: 3/8"
- Max. pressure: 13kgs



## AIR DUST GUN KIT

Model > **DG-10B**

- For nozzle can choose nickel-plated type or polished one.
- Body and handle made of new ABS
- Long nozzle is perfect for blowing hard-to-reach places
- Easy to use



## AIR GUN

Model > **NPN-989**

- Inlet Thread Size: 1/4" BSP or 1/4" NPT
- Material: Aluminum



# AIR NAILING GUN

## AIR MEDIUM CROWN STAPLER

Model > **F5040**



Dimension (WxHxL)	Weight	Required pressure	Max. pressure		Nail capacity
mm	kgs	bar	psi	bar	pcs
241x235x59	1.27	4-7	120	8.3	100

- New type release latch for easy and fast loading.
- Durable hardened oxidized aluminum magazine.
- Continuous operation for high efficiency.
- Economical air consumption and low noise.

- Good application for furniture bcks, upholstery, paneling drawers and rails, heavy cabinet work, plywood assembly.
- Color Available: silver metallic color or any paint color.

## AIR NAILING GUN

Model > **F30**



Weight	Dimension (WxHxL)	Nail capacity	Operating pressure	Material
kgs	mm	pcs	psi	-
1.2	240x60x196	100	60-100	aluminum

## AIR NAILING GUN

Model > **F50**



Weight	Dimension (WxHxL)	Nail capacity	Operating pressure	Material
kgs	mm	pcs	psi	-
1.46	250x60x232	100	60-100	aluminum

## AIR NAILING GUN SET

Model > **F30Z**



# AIR NAILING GUN

## AIR NAILING GUN

Model > **F-30**



Weight	Dimension (WxHxL)	Max. Operatating Pressure	Operating pressure	Material
kgs	mm	bar	bar	-
1.27	240x196x60	8.3	4-7	aluminum

## AIR NAILING GUN

Model > **422**



Weight	Dimension (WxHxL)	Max. Operatating Pressure	Operating pressure	Material
kgs	mm	bar	bar	-
1.27	240x170x55	8.3	4-7	aluminum

## AIR NAILING GUN

Model > **F5040**

- Actuation mode: single sequential action and contant actuation
- Specification of fasteners:  
Nail: 15, 20, 25, 30, 32, 35, 38, 40, 45, 50mm  
Staple: 5.7x(10-40)mm



Weight	Dimension (WxHxL)	Max. Operatating Pressure	Operating pressure	Material
kgs	mm	bar	bar	-
1.27	241x235x59	8.3	4-7	aluminum

## AIR NAILING GUN SET

Model > **F5040Z**





## AIR FILTER AND OILER



**PT-50**  
Regulator Unit  
- (industrial quality)



**AFR-81-1**  
Air Filter  
- Pipe Size: 1/4"  
- Use Pressure: 6bar  
- Endure Pressure: 8bar  
- Working Pressure: 0-6bar  
- Packing: colour box



**AFR-80-04**  
Air Filter Regulator  
- Pipe Size: 1/4", 1/2", 3/8"



**AFR-80-02**  
Air Filter Regulator  
- Pipe Size: 1/4", 1/2", 3/8"  
- Use Pressure: 10bar  
- Endure Pressure: 15bar  
- Working Pressure: 0-7bar  
- Packing: colour box  
- G.W./N.W: 15/14kgs 25pcs/CTN  
- Measure: 48x47.5x21cm

## AIR FILTER AND OILER



**AFR-81-2**  
Min Lubricator  
- 1/4" NPT or 1/4" BSP



**AFR-81-3**  
Air Regulator  
- 1/4" NPT or 1/4" BSP



**AFR-80-05**  
Air Filter Regulator  
- Pipe Size: 1/4", 1/2", 3/8"



**AFR-80**  
Air Filter Regulator  
- Pipe Size: 1/4", 1/2", 3/8"  
- Use Pressure: 10bar  
- Endure Pressure: 15bar  
- Working Pressure: 0-7bar  
- Packing: colour box  
- G.W./N.W: 15/14kgs 25pcs/CTN  
- Measure: 48x47.5x21cm

## PNEUMATIC ACCESSORY SET



### QC-1

#### 18PCS PNEUMATIC ACCESSORY SET

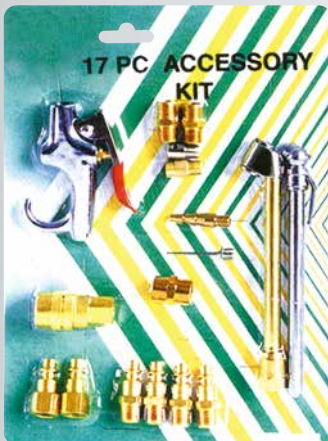
- 1pc Female Connector
- 1pc Quick Coupler
- 1pc Male Connector
- 1pc Universal Adaptor
- 1pc Valve Repair Tool
- 1pc Safety Nozzle
- 1pc Taperd Rubber Tip
- 1pc Blow Gun
- 1pc High Pressure Nozzle
- 2pcs Large Bore Valve Core
- 1pc Screen-on Chuck
- 1pc Taper Chuck
- 1pc Tape Chuck
- 1pc Chuck Adaptor
- 1pc Power Gauge
- 1pc Power Wire Brush
- 1pc Dual Tire Chuck



### QC-2

#### 14PCS PNEUMATIC ACCESSORY SET

- 1pc Tire Chuck
- 1pc Air Gauge 100PSI
- 4pcs Male Connector
- 2pcs Female Connector
- 1pc Air Blow Gun
- 1pc Quick Coupler
- 1pc 1/4" Male & Female
- 2pcs Hose Coupler
- 1pc Safety Nozzle
- 1pc Needle Inflation



### QC-3

#### 17PCS PNEUMATIC ACCESSORY SET

- 1pc Air Blow Gun
- 1pc Dual Tire Chuck
- 1pc Pencil Tire Gauge
- 1pc 1/4" Quick Coupler(F)
- 2pcs Male Hose Connector
- 1pc Female Hose Connector
- 4pcs 1/4" Male Plug
- 2pcs 1/4" Female Plug
- 1pc Blow Gun Adaptor
- 1pc Safety Nozzle
- 1pc Tapered Inflator
- 1pc Inflation Needle



### QC-4

#### 17PCS PNEUMATIC ACCESSORY SET

- 2pcs Female Coupler Brass
- 2pcs Female Plug Brass
- 2pcs Male Plug Brass
- 1pc Teflon Tape
- 1pc Recoil Hose
- 1pc Female Adaptor Nipple Brass
- 1pc Male Adaptor Nipple Brass
- 1pc Tire Gauge
- 1pc Ball Foot Chuck Brass
- 1pc Blow Gun
- 1pc Blow Gun Nozzle
- 1pc Blow Gun Adaptor
- 1pc Mattress Inflator
- 1pc Sports Ball Needle



### QC-5

#### 21PCS PNEUMATIC ACCESSORY SET

- 2pcs Female Quick Coupler
- 2pcs Female Plug
- 2pcs Male Plug
- 1pc Double Female Connector
- 1pc Double Male Connector
- 2pcs Fitting Wrench
- 1pc Air Blow Gun
- 1pcs 8 Hole Cleaning Nozzle with Shield
- 1pc Air Gauge
- 1pc Thread Seal Tape
- 1pc Safety Nozzle
- 1pc High Pressure Nozzle
- 2pcs Inflation Needle
- 1pc Tire Chuck
- 1pc 25FT. Memory Recoil Air Hose



### QC-6

#### 16PCS PNEUMATIC ACCESSORY SET

- 2pcs 1/4" Universal Couple Female Brass
- 2pcs 1/4" Male Plug Steel
- 2pcs 1/4" Female Plug Steel
- 1pc Female Connector Brass
- 2pcs Male Connector Brass
- 1pc Inflator Gauge
- 1pc Blow Gun
- 1pc Safety Nozzle
- 1pc Dual Tire Chuck
- 1pc Tapered Inflator Nozzle Brass
- 2pcs Inflation Needle
- 1pc Thread Seal Tape

## QUICK COUPLER

### QC-11



- Male 1/4", 3/8", 1/2"
- Sleeve 1/4", 3/8", 1/2"
- Female 1/4", 3/8", 1/2"
- Male 1/4", 3/8", 1/2"

### QC-14



- Male 1/4", 3/8", 1/2"
- Female 1/4", 3/8", 1/2"
- Sleeve 1/4", 3/8", 1/2"
- Sleeve 1/4", 3/8", 1/2"

### QC-12



- Japanese Type
- Male 1/4", 3/8", 1/2"
- Female 1/4", 3/8", 1/2"
- Sleeve 1/4", 3/8", 1/2"

### QC-15



- Japanese Type
- 1/4", 3/8", 1/2"
- 1/4", 3/8", 1/2"
- 1/4", 3/8", 1/2"

### QC-13



- European Type
- Male 1/4", 3/8", 1/2"
- 1/4", 3/8", 1/2"
- Female 1/4", 3/8", 1/2"

### QC-16



5pcs Air Quick Coupler Kit



### QC-7

14pcs Leisure Goods Nozzle & Adaptor Pack



### QC-8

5pcs Hose Repair Kit



### QC-9

14pcs Inflation Kit



### QC-24

1/4" Industrial Series American Type (brass made)



### QC-22

Outside Thread American Type (brass made)



### QC-23

Internal Thread American Type (brass made)

Алматы (7273)495-231  
Ангарск (3955)60-70-56  
Архангельск (8182)63-90-72  
Астрахань (8512)99-46-04  
Барнаул (3852)73-04-60  
Белгород (4722)40-23-64  
Благовещенск (4162)22-76-07  
Брянск (4832)59-03-52  
Владивосток (423)249-28-31  
Владикавказ (8672)28-90-48  
Владимир (4922)49-43-18  
Волгоград (844)278-03-48  
Вологда (8172)26-41-59  
Воронеж (473)204-51-73  
Екатеринбург (343)384-55-89

Иваново (4932)77-34-06  
Ижевск (3412)26-03-58  
Иркутск (395)279-98-46  
Казань (843)206-01-48  
Калининград (4012)72-03-81  
Калуга (4842)92-23-67  
Кемерово (3842)65-04-62  
Киров (8332)68-02-04  
Коломна (4966)23-41-49  
Кострома (4942)77-07-48  
Краснодар (861)203-40-90  
Красноярск (391)204-63-61  
Курск (4712)77-13-04  
Курган (3522)50-90-47  
Липецк (4742)52-20-81

Магнитогорск (3519)55-03-13  
Москва (495)268-04-70  
Мурманск (8152)59-64-93  
Набережные Челны (8552)20-53-41  
Нижегород (831)429-08-12  
Новокузнецк (3843)20-46-81  
Ноябрьск (3496)41-32-12  
Новосибирск (383)227-86-73  
Омск (3812)21-46-40  
Орел (4862)44-53-42  
Оренбург (3532)37-68-04  
Пенза (8412)22-31-16  
Петрозаводск (8142)55-98-37  
Псков (8112)59-10-37  
Пермь (342)205-81-47

Ростов-на-Дону (863)308-18-15  
Рязань (4912)46-61-64  
Самара (846)206-03-16  
Санкт-Петербург (812)309-46-40  
Саратов (845)249-38-78  
Севастополь (8692)22-31-93  
Саранск (8342)22-96-24  
Симферополь (3652)67-13-56  
Смоленск (4812)29-41-54  
Сочи (862)225-72-31  
Ставрополь (8652)20-65-13  
Сургут (3462)77-98-35  
Сыктывкар (8212)25-95-17  
Тамбов (4752)50-40-97  
Тверь (4822)63-31-35

Тольятти (8482)63-91-07  
Томск (3822)98-41-53  
Тула (4872)33-79-87  
Тюмень (3452)66-21-18  
Ульяновск (8422)24-23-59  
Улан-Удэ (3012)59-97-51  
Уфа (347)229-48-12  
Хабаровск (4212)92-98-04  
Чебоксары (8352)28-53-07  
Челябинск (351)202-03-61  
Череповец (8202)49-02-64  
Чита (3022)38-34-83  
Якутск (4112)23-90-97  
Ярославль (4852)69-52-93

Россия +7(495)268-04-70

Казахстан +7(7172)727-132

Киргизия +996(312)96-26-47

<https://runda.nt-rt.ru/> || [rac@nt-rt.ru](mailto:rac@nt-rt.ru)